

Mouse IL1 beta protein, His tag (active)

Cat. No. GTX00293-pro

实验应用 Functional Assay

Speciess Mouse

Package

10 µg

实验应用

应用说明

IL-1 β (Interleukin-1 beta) is a proinflammatory and immunoregulatory cytokine involved in a variety of cellular activities. It has been elucidated that IL-1 β stimulation of cells activates MMP-9 (matrix metalloproteinases-9) secretion by the activation of the dual signalling pathways. Thus, a stimulation assay of IL-1 β was conducted using 3T3 cell line, and the MMP-9 activity was detected through gel zymography. Briefly, 1×10^6 3T3 cells were cultured overnight in 5% DMEM, washed with serum-free medium and then stimulated with different concentrations of IL-1 β for 20h, and cell lysates were collected to measure MMP-9 activity. Cell lysates samples were denatured by SDS loading buffer, electrophoresed through sodium dodecyl sulphate-polyacrylamide gel (SDS-PAGE; 10% gels) containing gelatin (1mg/mL) with nonreducing conditions. After renaturation, incubation and coomassiebrilliant blue (CBB)-stained, MMPs hydrolyzed gelatin nearby, indicated by the white binds on the gel. Increased MMP-9 activity in 3T3 cells due to the stimulation of IL-1 β .

Observed MW 19 kDa.

属性

形式 Lyophilized powder

存储溶液 Reconstitute with 20mM Tris and 150mM NaCl to 0.1-1.0mg/ml. Do not vortex. Lyophilized from 20mM Tris, 150mM NaCl, 1mM EDTA, 1mM DTT, 0.01% SKL, 5% Trehalose.

保存剂 ProClin 300

存放说明 For short-term storage (1-2 weeks), store at 4°C. For long-term storage, store at -20°C or below. After reconstitution, keep as concentrated solution. Avoid freeze-thaw cycles.

Region/Sequence N-terminal His-Tag; Val118~Ser269 (NP_032387.1)

表达系统 HEK293 cells

纯度 > 97%

内毒素 < 1 EU/µg

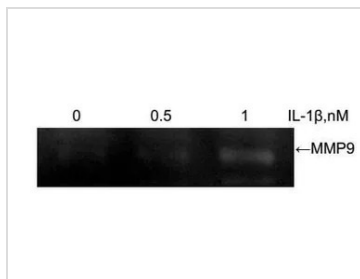
偶联 Unconjugated

注意事项 For laboratory use only. Not for any clinical, therapeutic, or diagnostic use in humans or animals. Not for animal or human consumption.



For full product information, images and publications, please visit our [website](#).

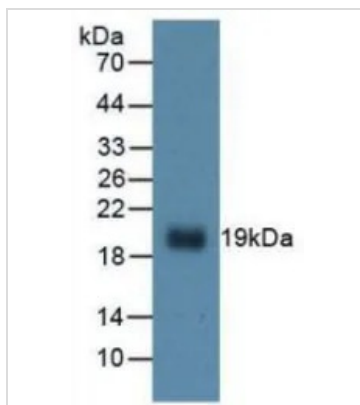
產品圖片



GTX00293-pro Functional Assay Image

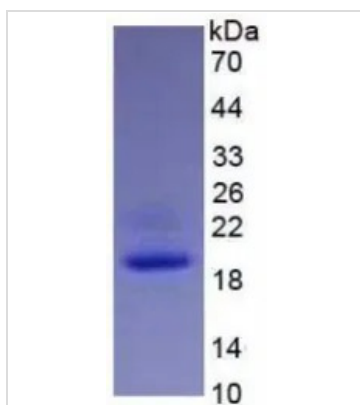
ELISA detection of secreted MMP9 protein activation from 3T3 cells induced by GTX00293-pro Mouse IL1 beta protein (active) for 20hrs.

Recombinant protein concentrations: 0.5 and 1 ng/ml.



GTX00293-pro Image

WB analysis of GTX00293-pro Mouse IL1 beta protein (active).



GTX00293-pro Image

SDS-PAGE analysis of GTX00293-pro Mouse IL1 beta protein (active).



For full product information, images and publications, please visit our [website](#).