

## Mouse Reg3B protein, His tag (active)

Cat. No. GTX00307-pro

实验应用 Functional Assay

Speciess Mouse

Package

10 µg

## 实验应用

## 应用说明

Regenerating Islet Derived Protein 3 Beta (REG3b) also known as PAP-I and HIP is bactericidal C-type lectin which acts against several intestinal Gram-positive bacteria and Gram-negative bacteria. The Reg family proteins have been implicated in a range of physiological processes including acting as acute phase reactants, lectins, survival/growth factors for insulin-producing pancreatic beta-cells, neural cells, and epithelial cells of the digestive system. To test the effect of REG3b on cell proliferation of SK-N-SH, SK-N-SH cells were seeded into triplicate wells of 96-well plates at a density of 5000 cells/well and allowed to attach overnight, then the medium was replaced with serum-free standard DMEM prior to the addition of various concentrations of REG3b. After incubated for 72h, cells were observed by inverted microscope and cell proliferation was measured by Cell Counting Kit-8 (CCK-8). Briefly, 10 µl of CCK-8 solution was added to each well of the plate, then measure the absorbance at 450nm using a microplate reader after incubating the plate for 1-4 hours at 37°C. Cell proliferation of SK-N-SH cells after incubation with REG3b for 72h observed by inverted microscope.

Observed MW 17 kDa.

## 属性

形式 Lyophilized powder

存储溶液 Reconstitute with 20mM Tris and 150mM NaCl to 0.1-1.0mg/ml. Do not vortex. Lyophilized from 20mM Tris, 150mM NaCl, 1mM EDTA, 1mM DTT, 0.01% SKL, 5% Trehalose.

保存剂 ProClin 300

存放说明 For short-term storage (1-2 weeks), store at 4°C. For long-term storage, store at -20°C or below. After reconstitution, keep as concentrated solution. Avoid freeze-thaw cycles.

Region/Sequence N-terminal His-Tag; Glu27~Gly175 (NP\_035166.1)

表达系统 E. coli

纯度 &gt; 97%

内毒素 &lt; 1 EU/µg

偶联 Unconjugated

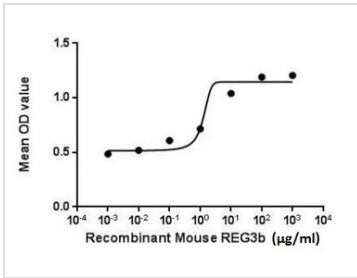
注意事项 For laboratory use only. Not for any clinical, therapeutic, or diagnostic use in humans or animals. Not for animal or human consumption.



For full product information, images and publications, please visit our [website](#).

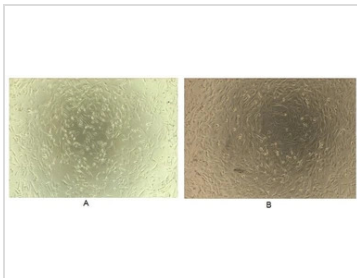
Date 2025 / 05 / 17 Page 1 of 2

產品圖片



**GTX00307-pro Functional Assay Image**

The dose effect curve of GTX00307-pro Mouse Reg3B protein (active) on SK-N-SH cells. After incubation of Mouse Reg3B protein (active) for 72 hrs, cell proliferation was measured by Cell Counting Kit-8 (CCK-8).

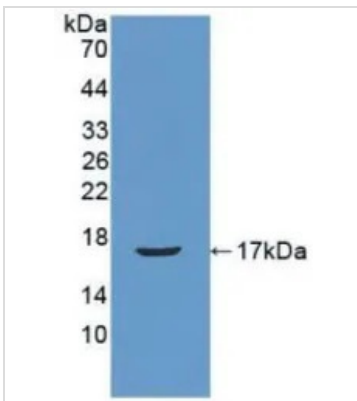


**GTX00307-pro Functional Assay Image**

Cell proliferation effect of GTX00307-pro Mouse Reg3B protein (active).

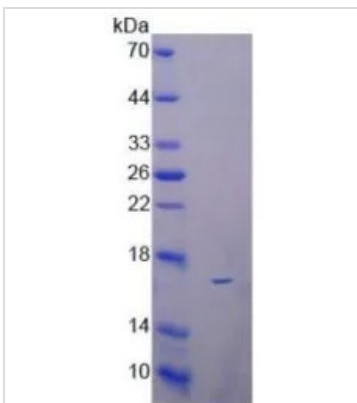
(A) Unstimulated SK-N-SH cells cultured in serum-free DMEM for 72hrs.

(B) SK-N-SH cells cultured in DMEM, stimulated with 10 ng/ml REG3b 72hrs.



**GTX00307-pro Image**

WB analysis of GTX00307-pro Mouse Reg3B protein (active).



**GTX00307-pro Image**

SDS-PAGE analysis of GTX00307-pro Mouse Reg3B protein (active).



For full product information, images and publications, please visit our [website](http://www.genetex.com).