

Rb (phospho Thr821) antibody [24A7]

Cat. No. GTX00682

宿主	Mouse
克隆	Monoclonal
同种型	IgG1
实验应用	WB, ELISA
种属反应	Human

实验应用

应用说明

*最佳稀释倍数与浓度应由研究人员确认

Suggested dilution	Recommended dilution
WB	~1 µg/ml
ELISA	Assay dependent

以下为常规应用缩写的中文注解

WB: 免疫印迹

ICC/IF: 细胞染色

IHC-P: 石蜡切片

IHC-Fr: 冰冻切片

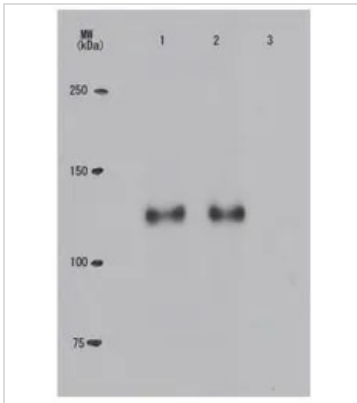
属性

形式	Liquid
存储溶液	Filter-sterilized PBS, 50% Glycerol
保存剂	No preservatives
存放说明	Store as concentrated solution. Centrifuge briefly prior to opening vial. For short-term storage (1-2 weeks), store at 4°C. For long-term storage, aliquot and store at -20°C or below. Avoid multiple freeze-thaw cycles.
浓度	1 mg/ml (Please refer to the vial label for the specific concentration.)
偶联	Unconjugated
注意事项	仅供实验室使用。不适用于人类或动物的任何临床、治疗或诊断用途。不适合动物或人类食用。



For full product information, images and publications, please visit our [website](#).

產品圖片

**GTX00682 WB Image**

WB analysis of various samples using GTX00682 Rb (phospho Thr821) antibody [24A7]. The cell extract were immuno-precipitated with anti-Myc antibody and then analyzed by Western Blot with GTX00682 Rb (phospho Thr821) antibody [24A7].

Lane 1 : H1299 overexpressing Myc-tagged wild-type Rb

Lane 2 : H1299 overexpressing Myc-tagged Rb (S795A)

Lane 3 : H1299 overexpressing Myc-tagged Rb (T821A).



For full product information, images and publications, please visit our [website](#).