

Rad51 antibody

Cat. No. GTX00719

宿主	Rabbit
克隆	Polyclonal
同种型	IgG
实验应用	WB, ICC/IF, IP
种属反应	Human, Chicken, Xenopus, Rodent

实验应用

应用说明

*最佳稀释倍数与浓度应由研究人员确认

Suggested dilution	Recommended dilution
WB	1:1000-1:5000
ICC/IF	Assay dependent
IP	Assay dependent

以下为常规应用缩写的中文注解

WB: 免疫印迹

ICC/IF: 细胞染色

IHC-P: 石蜡切片

IHC-Fr: 冰冻切片

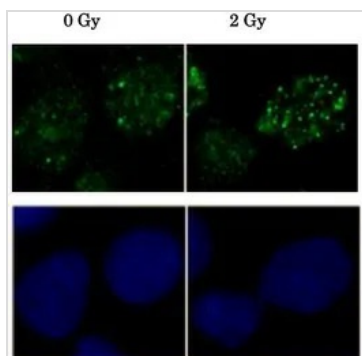
属性

形式	Liquid
存储溶液	Serum
保存剂	0.09% Sodium azide
存放说明	Store as concentrated solution. Centrifuge briefly prior to opening vial. For short-term storage (1-2 weeks), store at 4°C. For long-term storage, aliquot and store at -20°C or below. Avoid multiple freeze-thaw cycles.
偶联	Unconjugated
注意事项	仅供实验室使用。不适用于人类或动物的任何临床、治疗或诊断用途。不适合动物或人类食用。



For full product information, images and publications, please visit our [website](#).

產品圖片

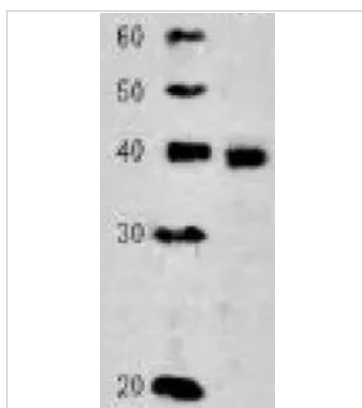
**GTX00719 ICC/IF Image**

ICC/IF analysis of U2OS cells irradiated by X-ray (2 Gy) for 2hrs using GTX00719 Rad51 antibody.

Green : Primary antibody

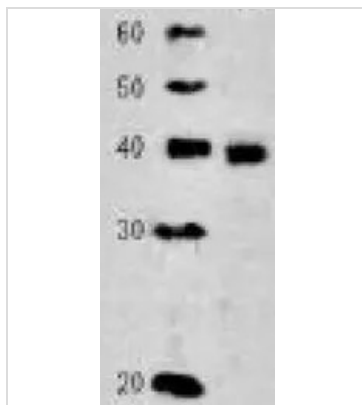
Blue : Hoechst 33342

Dilution : 1:6000

**GTX00719 WB Image**

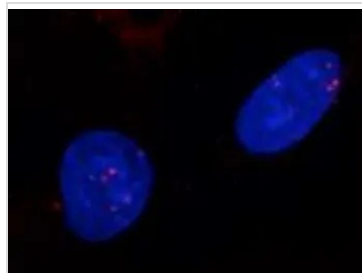
WB analysis of crude extract of Xenopus using GTX00719 Rad51 antibody.

Dilution : 1:1000

**GTX00719 WB Image**

WB analysis of HeLa whole cell lysate using GTX00719 Rad51 antibody.

Dilution : 1:2000

**GTX00719 ICC/IF Image**

ICC/IF analysis of normal human diploid cells which were irradiated by X-ray (0.5 Gy) for 6 hrs using GTX00719 Rad51 antibody.

Red : Primary antibody

Dilution : 1:100

Fixation : Cold Methanol for 10 min on ice

Permeabilization : 0.5% Triton X-100 for 5 min on ice



For full product information, images and publications, please visit our [website](#).