

RanBP9 antibody

Cat. No. GTX00728

宿主	Rabbit
克隆	Polyclonal
同种型	IgG
实验应用	WB, ICC/IF, IHC-P, IP
种属反应	Human, Mouse, Dog, Hamster, Monkey, Rodent, Chinese Hamster

实验应用

应用说明

*最佳稀释倍数与浓度应由研究人员确认

Suggested dilution	Recommended dilution
WB	1:1000-1:2000
ICC/IF	1:200-1:1000
IHC-P	1:200
IP	Assay dependent

Note : Recommend using a heat mediated antigen retrieval with citrate buffer (pH 6.0).

以下为常规应用缩写的中文注解

WB: 免疫印迹

ICC/IF: 细胞染色

IHC-P: 石蜡切片

IHC-Fr: 冰冻切片

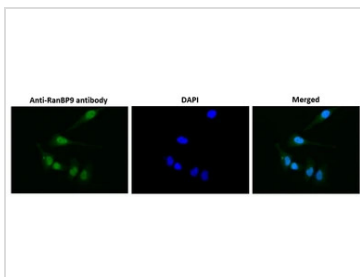
属性

形式	Liquid
存储溶液	Serum
保存剂	0.09% Sodium azide
存放说明	Store as concentrated solution. Centrifuge briefly prior to opening vial. For short-term storage (1-2 weeks), store at 4°C. For long-term storage, aliquot and store at -20°C or below. Avoid multiple freeze-thaw cycles.
偶联	Unconjugated
注意事项	仅供实验室使用。不适用于人类或动物的任何临床，治疗或诊断用途。不适合动物或人类食用。



For full product information, images and publications, please visit our [website](#).

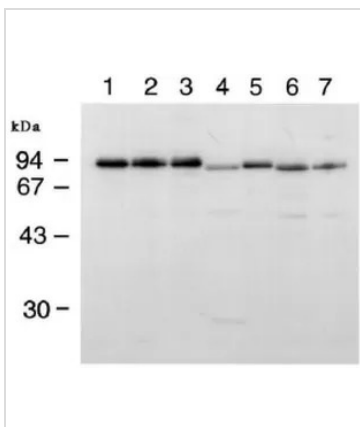
產品圖片

**GTX00728 ICC/IF Image**

ICC/IF analysis of HeLa cells using GTX00728 RanBP9 antibody.

Dilution : 1:1000

Fixation : 4% PFA

**GTX00728 WB Image**

WB analysis of various samples using GTX00728 RanBP9 antibody.

Lane 1 : HeLa whole cell lysate

Lane 2 : KB whole cell lysate

Lane 3 : Cos-7 whole cell lysate

Lane 4 : BHK21 whole cell lysate

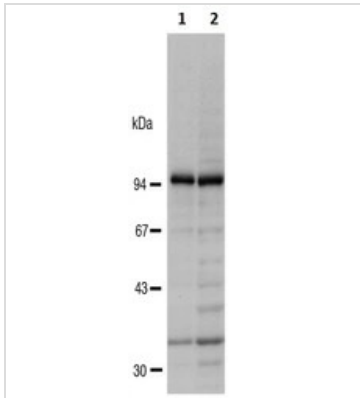
Lane 5 : CHO whole cell lysate

Lane 6 : WEHI whole cell lysate

Lane 7 : FM3A whole cell lysate

Dilution : 1:1000

Loading : 50 µg

**GTX00728 WB Image**

WB analysis of various samples using GTX00728 RanBP9 antibody.

Lane 1 : HeLa whole cell lysate

Lane 2 : U2OS whole cell lysate

Dilution : 1:2000



For full product information, images and publications, please visit our [website](#).