

alanyl-tRNA synthetase antibody

Cat. No. GTX00903

宿主	Rabbit
克隆	Polyclonal
同种型	IgG
实验应用	WB, ICC/IF
种属反应	Human, Mouse, Hamster

实验应用

应用说明

*最佳稀释倍数与浓度应由研究人员确认

Suggested dilution	Recommended dilution
WB	1:100-1:1000
ICC/IF	1:100

以下为常规应用缩写的中文注解

WB: 免疫印迹

ICC/IF: 细胞染色

IHC-P: 石蜡切片

IHC-Fr: 冰冻切片

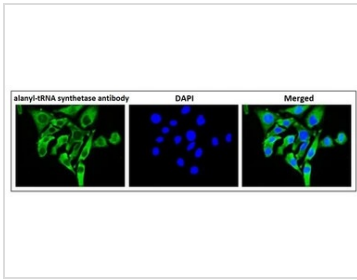
属性

形式	Liquid
存储溶液	Serum
保存剂	0.05% Sodium azide
存放说明	Store as concentrated solution. Centrifuge briefly prior to opening vial. For short-term storage (1-2 weeks), store at 4°C. For long-term storage, aliquot and store at -20°C or below. Avoid multiple freeze-thaw cycles.
偶联	Unconjugated
注意事项	仅供实验室使用。不适用于人类或动物的任何临床、治疗或诊断用途。不适合动物或人类食用。



For full product information, images and publications, please visit our [website](#).

產品圖片

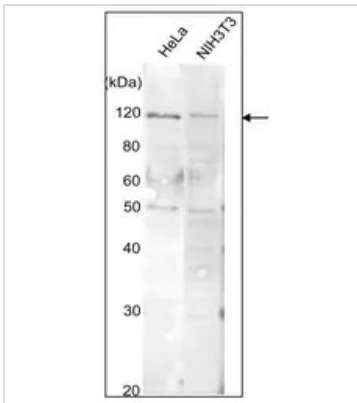
**GTX00903 ICC/IF Image**

ICC/IF analysis of HeLa cells using GTX00903 alanyl-tRNA synthetase antibody.

Fixation : 4% PFA

Permeabilization : 0.25% Triton X-100

Dilution : 1:100

**GTX00903 WB Image**

WB analysis of HeLa and NIH3T3 whole cell lysates using GTX00903 alanyl-tRNA synthetase antibody.

Dilution : 1:300

Loading : 10 μ g



For full product information, images and publications, please visit our [website](#).