

Ferritin Heavy Chain antibody [GT1149]

Cat. No. GTX00928

宿主	Rabbit
克隆	Monoclonal
同种型	IgG
实验应用	WB
种属反应	Human, Mouse, Rat

引用文献 (1)

实验应用

应用说明

*最佳稀释倍数与浓度应由研究人员确认

Suggested dilution	Recommended dilution
WB	1:500 - 1:2000

以下为常规应用缩写的中文注解

WB: 免疫印迹

ICC/IF: 细胞染色

IHC-P: 石蜡切片

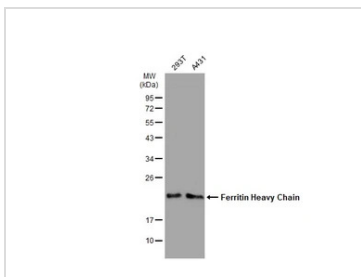
IHC-Fr: 冰冻切片

属性

形式	Liquid
存储溶液	PBS, 50% Glycerol
保存剂	0.02% Sodium azide
存放说明	Store as concentrated solution. Centrifuge briefly prior to opening vial. For short-term storage (1-2 weeks), store at 4°C. For long-term storage, aliquot and store at -20°C or below. Avoid multiple freeze-thaw cycles.
浓度	Batch dependent (Please refer to the vial label for the specific concentration.)
偶联	Unconjugated
注意事项	仅供实验室使用。不适用于人类或动物的任何临床, 治疗或诊断用途。不适合动物或人类食用。

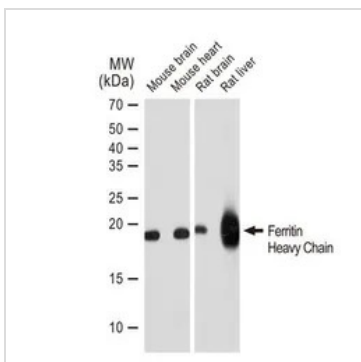
For full product information, images and publications, please visit our [website](#).

產品圖片



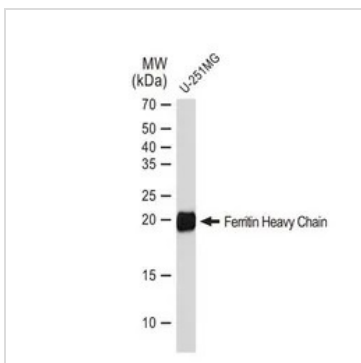
GTX00928 WB Image

Various whole cell extracts (30 µg) were separated by 12% SDS-PAGE, and the membrane was blotted with Ferritin Heavy Chain antibody [GT1149] (GTX00928) diluted at 1:1000. The HRP-conjugated anti-rabbit IgG antibody (GTX213110-01) was used to detect the primary antibody.



GTX00928 WB Image

WB analysis of various samples using GTX00928 Ferritin Heavy Chain antibody [GT1149].
 Dilution : 1:1000
 Loading : 25 µg



GTX00928 WB Image

WB analysis of U251-MG whole cell lysate using GTX00928 Ferritin Heavy Chain antibody [GT1149].
 Dilution : 1:1000
 Loading : 25 µg



For full product information, images and publications, please visit our [website](#).