

GSK3 beta (phospho Ser9) antibody [GT1209]

Cat. No. GTX00971

宿主	Rabbit
克隆	Monoclonal
同种型	IgG
实验应用	WB, IHC-P
种属反应	Human, Mouse

实验应用

应用说明

*最佳稀释倍数与浓度应由研究人员确认

Suggested dilution	Recommended dilution
WB	1:500 - 1:2000
IHC-P	1:50 - 1:200

以下为常规应用缩写的中文注解

WB: 免疫印迹

ICC/IF: 细胞染色

IHC-P: 石蜡切片

IHC-Fr: 冰冻切片

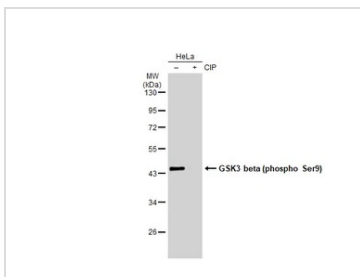
属性

形式	Liquid
存储溶液	PBS, 50% Glycerol
保存剂	0.02% Sodium azide
存放说明	Store as concentrated solution. Centrifuge briefly prior to opening vial. For short-term storage (1-2 weeks), store at 4°C. For long-term storage, aliquot and store at -20°C or below. Avoid multiple freeze-thaw cycles.
浓度	Batch dependent (Please refer to the vial label for the specific concentration.)
偶联	Unconjugated
注意事项	仅供实验室使用。不适用于人类或动物的任何临床、治疗或诊断用途。不适合动物或人类食用。

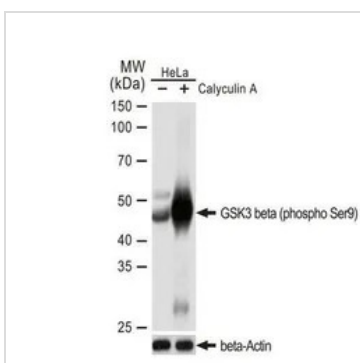


For full product information, images and publications, please visit our [website](#).

產品圖片

**GTX00971 WB Image**

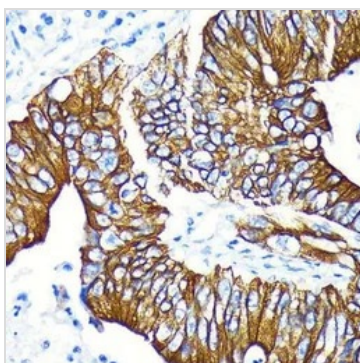
Untreated (-) and treated (+) HeLa whole cell extracts (30 μ g) were separated by 10% SDS-PAGE, and the membrane was blotted with GSK3 beta (phospho Ser9) antibody [GT1209] (GTX00971) diluted at 1:500. The HRP-conjugated anti-rabbit IgG antibody (GTX213110-01) was used to detect the primary antibody.

**GTX00971 WB Image**

WB analysis of HeLa cell extracts with/without Calyculin A (100 nM, 37°C, 30 min) treatment after serum-starvation overnight using GTX00971 GSK3 beta (phospho Ser9) antibody [GT1209].

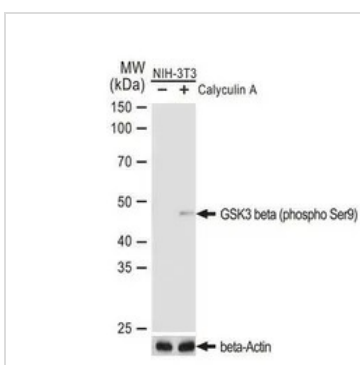
Dilution : 1:1000

Loading : 25 μ g

**GTX00971 IHC-P Image**

IHC-P analysis of human colon carcinoma tissue section using GTX00971 GSK3 beta (phospho Ser9) antibody [GT1209].

Dilution : 1:100

**GTX00971 WB Image**

WB analysis of NIH-3T3 cell extracts with/without Calyculin A (100 nM, 37°C, 30 min) treatment after serum-starvation overnight using GTX00971 GSK3 beta (phospho Ser9) antibody [GT1209].

Dilution : 1:1000

Loading : 25 μ g



For full product information, images and publications, please visit our [website](#).