

HLA-DR antibody [LN3] (FITC)

Cat. No. GTX01489-06

宿主	Mouse
克隆	Monoclonal
同种型	IgG2b
实验应用	FCM
种属反应	Human

引用文献 (1)

产品说明

摘要

The LN3 antibody reacts with a member of the human MHC Class II antigens, HLA-DR. The HLA-DR antigen is expressed on human antigen presenting cells including B lymphocytes, monocytes, macrophages, dendritic cells, and activated T lymphocytes. HLA-DR is a dimeric protein composed of alpha and beta subunits and is involved in the presentation of peptide antigens to CD4+ T cells.

实验应用

应用说明

*最佳稀释倍数与浓度应由研究人员确认

Suggested dilution

Recommended dilution

FCM	0.25 µg (5 µl) for 10 ⁵ -10 ⁸ cells in 100 µl sample per test
-----	---

以下为常规应用缩写的中文注解

WB: 免疫印迹

ICC/IF: 细胞染色

IHC-P: 石蜡切片

IHC-Fr: 冰冻切片

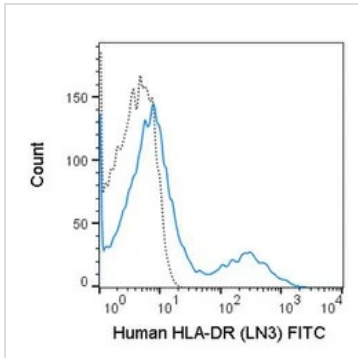
属性

形式	Liquid
存储溶液	10mM NaH ₂ PO ₄ , 150mM NaCl, 0.1% Gelatin
保存剂	0.09% Sodium azide
存放说明	Store as concentrated solution. Centrifuge briefly prior to opening vial. Store at 4°C. DO NOT FREEZE. Protect from light.
浓度	0.05 mg/ml (Please refer to the vial label for the specific concentration.)
偶联	Fluorescein isothiocyanate (FITC) Wavelength
注意事项	仅供实验室使用。不适用于人类或动物的任何临床，治疗或诊断用途。不适合动物或人类食用。



For full product information, images and publications, please visit our [website](#).

產品圖片

**GTX01489-06 FCM Image**

FACS analysis of human peripheral blood lymphocytes using GTX01489-06 HLA-DR antibody [LN3] (FITC).

Solid line : primary antibody

Dashed line : isotype control

antibody amount : 0.25 μ g (5 μ l)



For full product information, images and publications, please visit our [website](#).