

Cytokeratin 7 + 8 antibody [CAM5.2] (ready-to-use)

Cat. No. GTX01662

宿主	Mouse
克隆	Monoclonal
同种型	IgG2a
实验应用	IHC-P
种属反应	Human

引用文献 (5)

实验应用

应用说明

*最佳稀释倍数与浓度应由研究人员确认

Suggested dilution	Recommended dilution
IHC-P	Assay dependent

Note : Pretreatment of deparaffinized tissue with heat-induced epitope retrieval or enzymatic retrieval is recommended.

以下为常规应用缩写的中文注解

WB: 免疫印迹

ICC/IF: 细胞染色

IHC-P: 石蜡切片

IHC-Fr: 冰冻切片

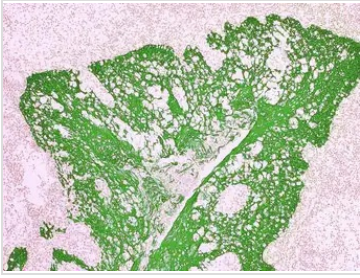
属性

形式	Liquid
存储溶液	Tris-HCl, 0.2% BSA
保存剂	0.09% Sodium azide
存放说明	Store as concentrated solution. Centrifuge briefly prior to opening vial. Store at 4°C.
浓度	Batch dependent (Please refer to the vial label for the specific concentration.)
偶联	Unconjugated
注意事项	仅供实验室使用。不适用于人类或动物的任何临床, 治疗或诊断用途。不适合动物或人类食用。



For full product information, images and publications, please visit our [website](#).

產品圖片

**GTX01662 IHC-P Image**

IHC-P analysis of human tonsil tissue using GTX01662 Cytokeratin 7 + 8 antibody [CAM5.2] (ready-to-use) with GTX03612 Tissue Glue.



For full product information, images and publications, please visit our [website](#).