

gp340 antibody

Cat. No. GTX03459

宿主	Rabbit
克隆	Polyclonal
同种型	IgG
实验应用	WB
种属反应	Human

实验应用

应用说明

*最佳稀释倍数与浓度应由研究人员确认

Suggested dilution	Recommended dilution
WB	Assay dependent

以下为常规应用缩写的中文注解

WB: 免疫印迹

ICC/IF: 细胞染色

IHC-P: 石蜡切片

IHC-Fr: 冰冻切片

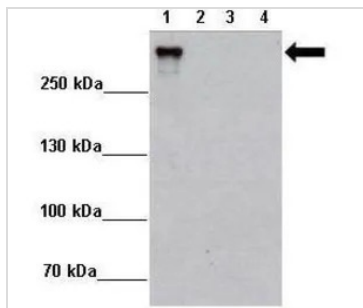
属性

形式	Liquid
存储溶液	PBS, 2% sucrose
保存剂	0.09% sodium azide
存放说明	Store as concentrated solution. Centrifuge briefly prior to opening vial. For short-term storage (1-2 weeks), store at 4°C. For long-term storage, aliquot and store at -20°C or below. Avoid multiple freeze-thaw cycles.
浓度	0.5 mg/ml (Please refer to the vial label for the specific concentration.)
偶联	Unconjugated
注意事项	仅供实验室使用。不适用于人类或动物的任何临床, 治疗或诊断用途。不适合动物或人类食用。



For full product information, images and publications, please visit our [website](#).

產品圖片



GTX03459 WB Image

WB analysis of various sample lysates using GTX03459 gp340 antibody.

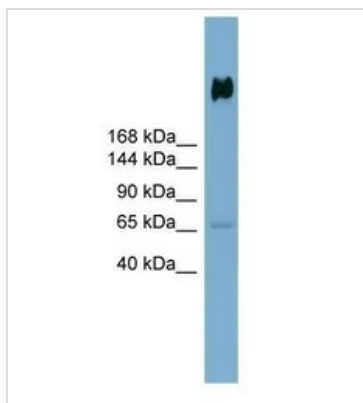
Lane 1 : 2µg MCF7-DMBT1 +Dox

Lane 2 : 2µg MCF7-DMBT1 -Dox

Lane 3 : 2µg MCF7-Ctrl+Dox

Lane 4 : 2µg MCF7-DMBT1 -Dox

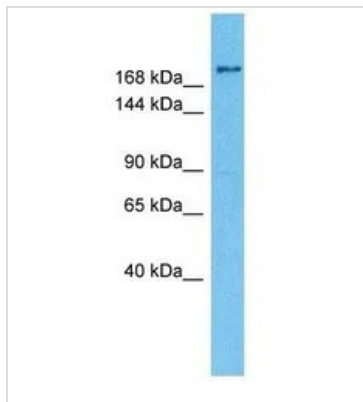
Dilution : _x000D_ 1:5000



GTX03459 WB Image

WB analysis of human stomach tissue lysate using GTX03459 gp340 antibody.

Dilution : 0.2-1µg/ml



GTX03459 WB Image

WB analysis of HepG2 whole cell lysate using GTX03459 gp340 antibody.

Dilution : 3µg/ml



For full product information, images and publications, please visit our [website](#).