

CD23 antibody [MSVA-023M] HistoMAX™

Cat. No. GTX04472

宿主	Mouse
克隆	Monoclonal
同种型	IgG1
实验应用	IHC-P
种属反应	Human

产品说明

This antibody was validated on 76 different Normal Tissues by IHC-P.

摘要

[Go to Normal Tissue Gallery](#)[Go to Cancer Tissue Gallery](#)

实验应用

应用说明

*最佳稀释倍数与浓度应由研究人员确认

Suggested dilution	Recommended dilution
IHC-P	1:100-1:200

Note : Manual staining : Heat-induced antigen retrieval for 5 minutes in an autoclave at 121°C in pH 7.8 Tris-EDTA-based Target Retrieval Solution buffer.

This antibody has been validated by Autostainer including Agilent/Dako - Autostainer Link 48, Bond RX-Lecia, and Roche-Ventana Discovery ULTRA. The detailed steps by Autostainer please refer to the [protocol](#).

以下为常规应用缩写的中文注解

WB: 免疫印迹

ICC/IF: 细胞染色

IHC-P: 石蜡切片

IHC-Fr: 冰冻切片

属性

形式	Liquid
存储溶液	PBS, 0.05% BSA (Please contact us for PBS only format)
保存剂	0.05% sodium azide
存放说明	Store as concentrated solution. Centrifuge briefly prior to opening vial. For short-term storage (1-2 weeks), store at 4°C. For long-term storage, aliquot and store at -20°C or below. Avoid multiple freeze-thaw cycles.
浓度	0.2 mg/ml (Please refer to the vial label for the specific concentration.)
偶联	Unconjugated

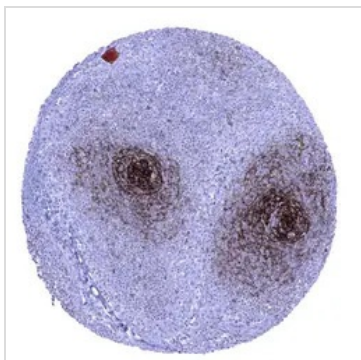


For full product information, images and publications, please visit our [website](#).

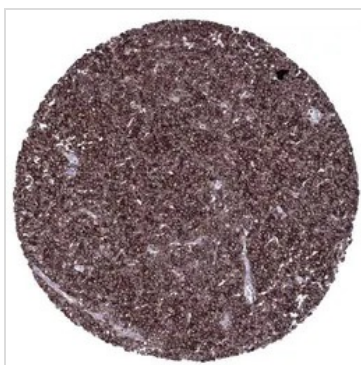
注意事项

仅供实验室使用。不适用于人类或动物的任何临床，治疗或诊断用途。不适合动物或人类食用。

產品图片

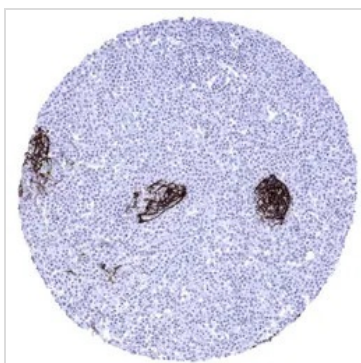
**GTX04472 IHC-P Image**

IHC-P analysis of human lymph node tissue using GTX04472 CD23 antibody [MSVA-023M] HistoMAX™. In lymph nodes a strong CD23 immunostaining is seen in follicular dendritic cells of germinal centres while staining is moderate in follicular and perifollicular B lymphocytes.

**GTX04472 IHC-P Image**

IHC-P analysis of human B-cell chronic lymphocytic leukemia (B-CLL) tissue using GTX04472 CD23 antibody [MSVA-023M] HistoMAX™.

B cell chronic lymphatic leukemia (B-CLL) composed of strongly CD23 positive tumor cells.

**GTX04472 IHC-P Image**

IHC-P analysis of human mantle cell lymphoma (MCL) tissue using GTX04472 CD23 antibody [MSVA-023M] HistoMAX™.

CD23 negative mantle cell lymphoma containing few germinal centre remnants that include CD23 positive dendritic cells.



For full product information, images and publications, please visit our [website](#).