

## NFkB p65 (phospho Ser276) antibody

**Cat. No. GTX04541**

|      |                          |
|------|--------------------------|
| 宿主   | Rabbit                   |
| 克隆   | Polyclonal               |
| 同种型  | IgG                      |
| 实验应用 | WB, ICC/IF, IHC-P, ELISA |
| 种属反应 | Human, Mouse, Rat        |

## 实验应用

## 应用说明

\*最佳稀释倍数与浓度应由研究人员确认

| Suggested dilution | Recommended dilution |
|--------------------|----------------------|
| WB                 | 1:500-1:2000         |
| ICC/IF             | 1:100-1:500          |
| IHC-P              | 1:50-1:200           |
| ELISA              | Assay dependent      |

以下为常规应用缩写的中文注解

WB: 免疫印迹

ICC/IF: 细胞染色

IHC-P: 石蜡切片

IHC-Fr: 冰冻切片

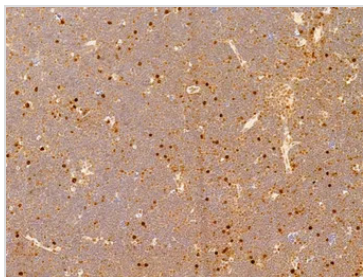
## 属性

|      |                                                                                                                                                                                                                            |
|------|----------------------------------------------------------------------------------------------------------------------------------------------------------------------------------------------------------------------------|
| 形式   | Liquid                                                                                                                                                                                                                     |
| 存储溶液 | PBS, 150mM NaCl, 50% Glycerol                                                                                                                                                                                              |
| 保存剂  | 0.02% Sodium Azide                                                                                                                                                                                                         |
| 存放说明 | Store as concentrated solution. Centrifuge briefly prior to opening vial. For short-term storage (1-2 weeks), store at 4°C. For long-term storage, aliquot and store at -20°C or below. Avoid multiple freeze-thaw cycles. |
| 浓度   | 1 mg/ml (Please refer to the vial label for the specific concentration.)                                                                                                                                                   |
| 偶联   | Unconjugated                                                                                                                                                                                                               |
| 注意事项 | 仅供实验室使用。不适用于人类或动物的任何临床、治疗或诊断用途。不适合动物或人类食用。                                                                                                                                                                                 |



For full product information, images and publications, please visit our [website](#).

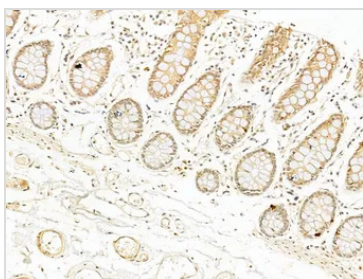
## 產品圖片

**GTX04541 IHC-P Image**

IHC-P analysis of rat thymus tissue using GTX04541 NFκB p65 (phospho Ser276) antibody.

Antigen retrieval : Heat mediated citrate buffer

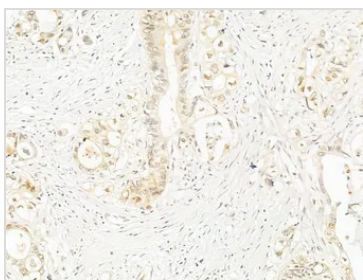
Dilution : 1:100

**GTX04541 IHC-P Image**

IHC-P analysis of human normal tissues adjacent to colorectal cancer tissue using GTX04541 NFκB p65 (phospho Ser276) antibody.

Antigen retrieval : Heat mediated citrate buffer

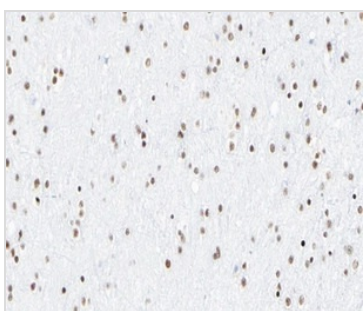
Dilution : 1:100

**GTX04541 IHC-P Image**

IHC-P analysis of human colorectal cancer tissue using GTX04541 NFκB p65 (phospho Ser276) antibody.

Antigen retrieval : Heat mediated citrate buffer

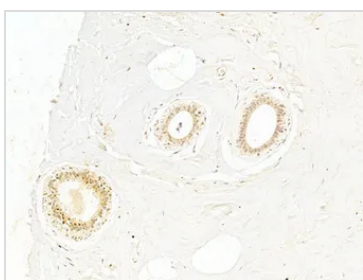
Dilution : 1:100

**GTX04541 IHC-P Image**

IHC-P analysis of human brain tissue using GTX04541 NFκB p65 (phospho Ser276) antibody.

Antigen retrieval : Heat mediated citrate buffer

Dilution : 1:200

**GTX04541 IHC-P Image**

IHC-P analysis of human normal tissues adjacent to mammary cancer tissue using GTX04541 NFκB p65 (phospho Ser276) antibody.

Antigen retrieval : Heat mediated citrate buffer

Dilution : 1:100



For full product information, images and publications, please visit our [website](#).