

xCT / SLC7A11 antibody

Cat. No. GTX04911

宿主	Rabbit
克隆	Polyclonal
同种型	IgG
实验应用	WB, ICC/IF, IHC-P
种属反应	Human, Mouse, Rat, Monkey

引用文献 (1)

实验应用

应用说明

*最佳稀释倍数与浓度应由研究人员确认

Suggested dilution	Recommended dilution
WB	1:500-1:2000
ICC/IF	1:100-1:500
IHC-P	1:50-1:200

以下为常规应用缩写的中文注解

WB: 免疫印迹

ICC/IF: 细胞染色

IHC-P: 石蜡切片

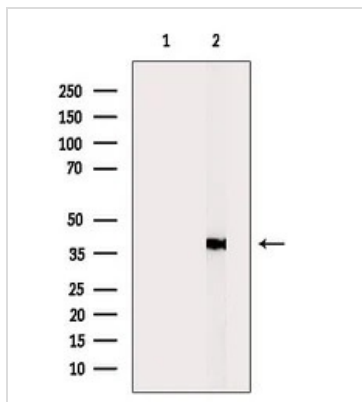
IHC-Fr: 冰冻切片

属性

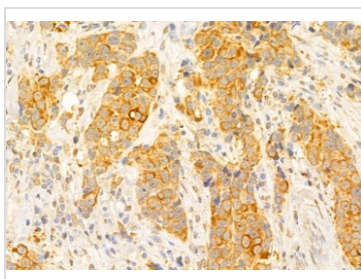
形式	Liquid
存储溶液	PBS, 150mM NaCl, 50% Glycerol
保存剂	0.02% Sodium Azide
存放说明	Store as concentrated solution. Centrifuge briefly prior to opening vial. For short-term storage (1-2 weeks), store at 4°C. For long-term storage, aliquot and store at -20°C or below. Avoid multiple freeze-thaw cycles.
浓度	1 mg/ml (Please refer to the vial label for the specific concentration.)
纯度	Purified by antigen-affinity chromatography
偶联	Unconjugated
注意事项	仅供实验室使用。不适用于人类或动物的任何临床, 治疗或诊断用途。不适合动物或人类食用。

For full product information, images and publications, please visit our [website](#).

產品圖片

**GTX04911 WB Image**

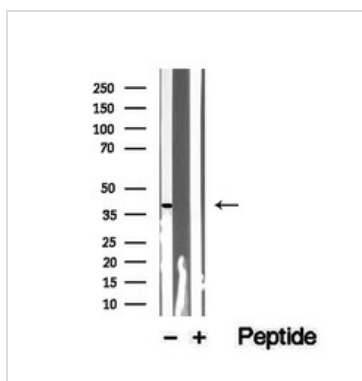
WB analysis of rat kidney tissue lysate using GTX04911 xCT / SLC7A11 antibody. The lane on the left was treated with blocking peptide.

**GTX04911 IHC-P Image**

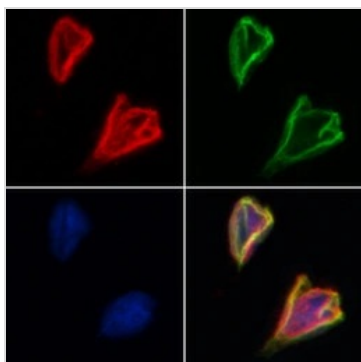
IHC-P analysis of human mammary cancer tissue using GTX04911 xCT / SLC7A11 antibody.

Antigen retrieval : Heat mediated citrate buffer

Dilution : 1:100

**GTX04911 WB Image**

WB analysis of mouse brain tissue lysate using GTX04911 xCT / SLC7A11 antibody. The lane on the right was treated with blocking peptide.

**GTX04911 ICC/IF Image**

ICC/IF analysis of PFA-fixed HeLa cells using GTX04911 xCT / SLC7A11 antibody.

Red : Primary antibody

Green : beta tubulin

Blue : DAPI

Dilution : 1:200

Permeabilization : 0.1% Triton X-100



For full product information, images and publications, please visit our [website](#).