

## KLF7 antibody

Cat. No. GTX04926

宿主	Rabbit
克隆	Polyclonal
同种型	IgG
实验应用	WB, IHC-P
种属反应	Human, Mouse

## 实验应用

## 应用说明

\*最佳稀释倍数与浓度应由研究人员确认

Suggested dilution	Recommended dilution
WB	1:500-1:2000
IHC-P	1:50-1:200

以下为常规应用缩写的中文注解

WB: 免疫印迹

ICC/IF: 细胞染色

IHC-P: 石蜡切片

IHC-Fr: 冰冻切片

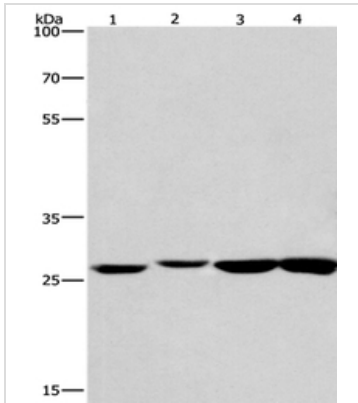
## 属性

形式	Liquid
存储溶液	PBS, 40% Glycerol
保存剂	0.05% Sodium Azide
存放说明	Store as concentrated solution. Centrifuge briefly prior to opening vial. For short-term storage (1-2 weeks), store at 4°C. For long-term storage, aliquot and store at -20°C or below. Avoid multiple freeze-thaw cycles.
浓度	2.9 mg/ml (Please refer to the vial label for the specific concentration.)
偶联	Unconjugated
注意事项	仅供实验室使用。不适用于人类或动物的任何临床，治疗或诊断用途。不适合动物或人类食用。



For full product information, images and publications, please visit our [website](#).

## 產品圖片

**GTX04926 WB Image**

WB analysis of various samples using GTX04926 KLF7 antibody.

Lane 1 : human colon cancer tissue lysate

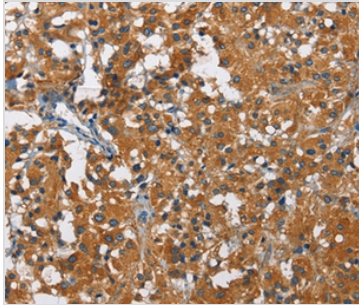
Lane 2 : mouse kidney tissue lysate

Lane 3 : mouse testis tissue lysate

Lane 4 : human fetal brain tissue lysate

Loading : 40 $\mu$ g

Dilution : 1.4  $\mu$ g/ml

**GTX04926 IHC-P Image**

IHC-P analysis of human thyroid cancer tissue using GTX04926 KLF7 antibody.

Dilution : 1:60



For full product information, images and publications, please visit our [website](#).