

## STAT5B antibody [GT1160]

Cat. No. GTX08967

宿主	Rabbit
克隆	Monoclonal
同种型	IgG
实验应用	WB, ICC/IF, IP
种属反应	Human, Mouse, Rat

★★★★★ 产品评论 (3)

## 实验应用

## 应用说明

\*最佳稀释倍数与浓度应由研究人员确认

Suggested dilution	Recommended dilution
WB	1:500 - 1:2000
ICC/IF	Assay dependent
IP	Assay dependent

以下为常规应用缩写的中文注解

WB: 免疫印迹

ICC/IF: 细胞染色

IHC-P: 石蜡切片

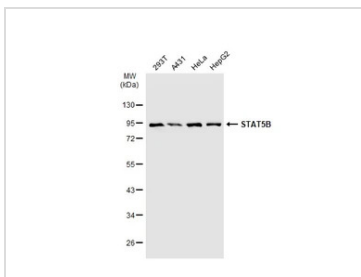
IHC-Fr: 冰冻切片

## 属性

形式	Liquid
存储溶液	PBS, 50% Glycerol
保存剂	0.02% Sodium azide
存放说明	Store as concentrated solution. Centrifuge briefly prior to opening vial. For short-term storage (1-2 weeks), store at 4°C. For long-term storage, aliquot and store at -20°C or below. Avoid multiple freeze-thaw cycles.
浓度	Batch dependent (Please refer to the vial label for the specific concentration.)
偶联	Unconjugated
注意事项	仅供实验室使用。不适用于人类或动物的任何临床, 治疗或诊断用途。不适合动物或人类食用。

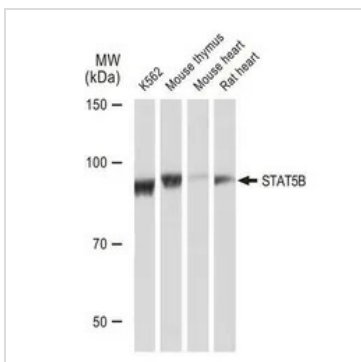
For full product information, images and publications, please visit our [website](#).

產品圖片



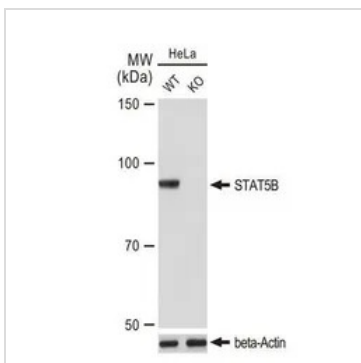
**GTX08967 WB Image**

Various whole cell extracts (30  $\mu$ g) were separated by 10% SDS-PAGE, and the membrane was blotted with STAT5B antibody [GT1160] (GTX08967) diluted at 1:500. The HRP-conjugated anti-rabbit IgG antibody (GTX213110-01) was used to detect the primary antibody.



**GTX08967 WB Image**

WB analysis of various samples using GTX08967 STAT5B antibody [GT1160].  
Dilution : 1:1000  
Loading : 25 $\mu$ g



**GTX08967 WB Image**

WB analysis of Wild-type (WT) and STAT5B knockout (KO) HeLa cell extracts using GTX08967 STAT5B antibody [GT1160].  
Dilution : 1:1000  
Loading : 25 $\mu$ g



For full product information, images and publications, please visit our [website](#).