

## EML1 antibody [C3], C-term

Cat. No. GTX100252

宿主	Rabbit
克隆	Polyclonal
同种型	IgG
实验应用	WB, ICC/IF, IHC-P
种属反应	Human, Mouse, Rat, Monkey

引用文献 (2)

## 实验应用

## 应用说明

\*最佳稀释倍数与浓度应由研究人员确认

Suggested dilution	Recommended dilution
WB	1:500-1:3000
ICC/IF	1:100-1:1000
IHC-P	1:100-1:1000

以下为常规应用缩写的中文注解

WB: 免疫印迹

ICC/IF: 细胞染色

IHC-P: 石蜡切片

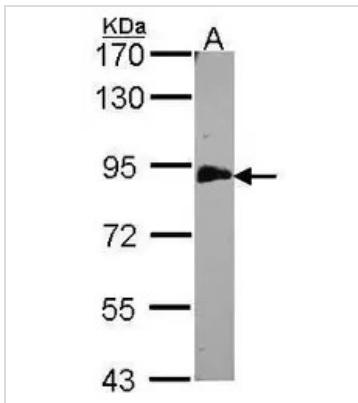
IHC-Fr: 冰冻切片

## 属性

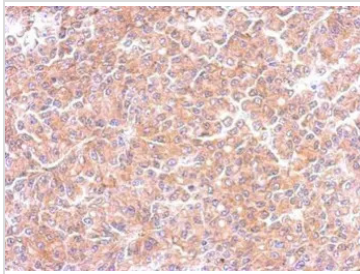
形式	Liquid
存储溶液	PBS, 20% Glycerol
保存剂	0.01% Thimerosal
存放说明	Store as concentrated solution. Centrifuge briefly prior to opening vial. For short-term storage (1-2 weeks), store at 4°C. For long-term storage, aliquot and store at -20°C or below. Avoid multiple freeze-thaw cycles.
浓度	1 mg/ml (Please refer to the vial label for the specific concentration.)
偶联	Unconjugated
RRID	AB_1240763
注意事项	仅供实验室使用。不适用于人类或动物的任何临床, 治疗或诊断用途。不适合动物或人类食用。

For full product information, images and publications, please visit our [website](#).

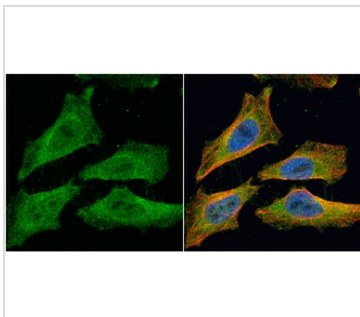
## 產品图片

**GTX100252 WB Image**

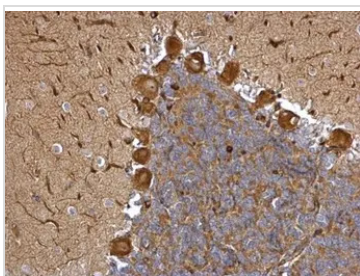
Sample (30 ug of whole cell lysate)  
 A: H1299  
 7.5% SDS PAGE  
 EML1 antibody  
 GTX100252 diluted at 1:500

**GTX100252 IHC-P Image**

Immunohistochemical analysis of paraffin-embedded RF48 xenograft, using EML1(GTX100252) antibody at 1:500 dilution.  
 Antigen Retrieval: Trilogy™ (EDTA based, pH 8.0) buffer, 15min

**GTX100252 ICC/IF Image**

EML1 antibody [c3], c-term detects EML1 protein at cytoplasm by immunofluorescent analysis.  
 Sample: HeLa cells were fixed in 4% paraformaldehyde at RT for 15 min.  
 Green: EML1 protein stained by EML1 antibody [c3], c-term (GTX100252) diluted at 1:200.  
 Red: alpha Tubulin, a cytoskeleton marker, stained by alpha Tubulin antibody [GT114] (GTX628802) diluted at 1:1000.  
 Blue: Hoechst 33342 staining.

**GTX100252 IHC-P Image**

EML1 antibody [C3], C-term detects EML1 protein at cytosol on rat hind brain by immunohistochemical analysis.  
 Sample: Paraffin-embedded rat hind brain.  
 EML1 antibody [C3], C-term (GTX100252) dilution: 1:500.  
 Antigen Retrieval: Trilogy™ (EDTA based, pH 8.0) buffer, 15min



For full product information, images and publications, please visit our [website](#).