

## E-Cadherin antibody

Cat. No. GTX100443

宿主	Rabbit
克隆	Polyclonal
同种型	IgG
实验应用	WB, ICC/IF, IHC-P, IHC-Wm, IP, PLA
种属反应	Human, Mouse, Rat, Zebrafish, Dog

引用文献 ( 127 )

★★★★★ 产品评论 ( 9 )

## 产品说明

## 摘要

E-Cadherin antibody detects E-cadherin protein, which is encoded by the CDH1 gene. E-cadherin is a calcium-dependent cell adhesion protein (predicted molecular weight of 97 kDa) that plays a vital role in cell migration and proliferation. Because E-cadherin is an epithelial cell marker, this antibody is a well-published and widely used reagent to study E-cadherin protein expression during the epithelial-mesenchymal transition (EMT) in various physiological and pathological processes.

## 实验应用

## 应用说明

\*最佳稀释倍数与浓度应由研究人员确认

Suggested dilution	Recommended dilution
WB	1:500-1:10000
ICC/IF	1:100-1:1000
IHC-P	1:100-1:1000
IHC-Wm	Assay dependent
IP	1:100-1:500
PLA	Assay dependent

以下为常规应用缩写的中文注解

WB: 免疫印迹

ICC/IF: 细胞染色

IHC-P: 石蜡切片

IHC-Fr: 冰冻切片

## 属性

形式	Liquid
存储溶液	PBS, 1% BSA, 20% Glycerol
保存剂	0.025% ProClin 300
存放说明	Store as concentrated solution. Centrifuge briefly prior to opening vial. For short-term storage (1-2 weeks), store at 4°C. For long-term storage, aliquot and store at -20°C or below. Avoid multiple freeze-thaw cycles.

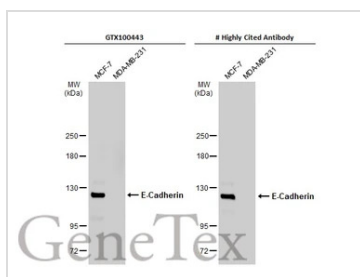


For full product information, images and publications, please visit our [website](#).

Date 2025 / 06 / 14 Page 1 of 2

浓度	0.14 mg/ml (Please refer to the vial label for the specific concentration.)
偶联	Unconjugated
RRID	AB_10729586
注意事项	仅供实验室使用。不适用于人类或动物的任何临床、治疗或诊断用途。不适合动物或人类食用。

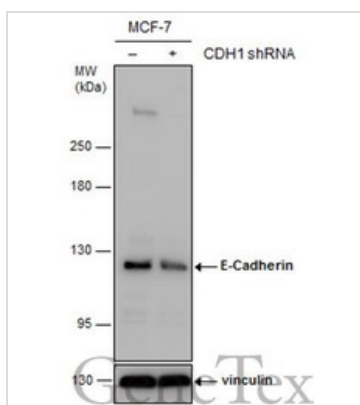
## 產品图片



## GTX100443 WB Image

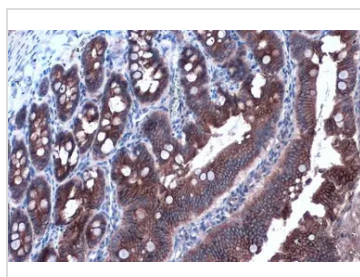
Various whole cell extracts (30  $\mu$ g) were separated by 5% SDS-PAGE, and the membranes were blotted with E-Cadherin antibody (GTX100443) diluted at 1:3000 and competitor's antibody diluted at 1:3000. The HRP-conjugated anti-rabbit IgG antibody (GTX213110-01) was used to detect the primary antibody.

\*The competitor is not affiliated with GeneTex and does not endorse this product.



## GTX100443 WB Image

Non-transfected (–) and transfected (+) MCF-7 whole cell extracts (30  $\mu$ g) were separated by 5% SDS-PAGE, and the membrane was blotted with E-Cadherin antibody (GTX100443) diluted at 1:7000. The HRP-conjugated anti-rabbit IgG antibody (GTX213110-01) was used to detect the primary antibody.



## GTX100443 IHC-P Image

E-Cadherin antibody detects E-Cadherin protein at cell membrane and cytoplasm by immunohistochemical analysis.

Sample: Paraffin-embedded rat duodenum.

E-Cadherin stained by E-Cadherin antibody (GTX100443) diluted at 1:1000.

Antigen Retrieval: Citrate buffer, pH 6.0, 15 min



For full product information, images and publications, please visit our [website](https://www.genetex.com).