

Vimentin antibody

Cat. No. GTX100619

宿主	Rabbit
克隆	Polyclonal
同种型	IgG
实验应用	WB, ICC/IF, IHC-P, IHC-Fr, IP, ELISA, Sandwich ELISA, IHC (Free Floating)
种属反应	Human, Mouse, Rat, Cat, Dog

引用文献 (144)

★★★★★ 产品评论 (6)

产品说明

摘要

Vimentin antibody detects vimentin, a type III intermediate filament protein with a predicted molecular weight of 54 kDa. Vimentin is highly expressed in cells of mesodermal origin as well as in some ectodermal cells, and is often used as a marker of mesenchymal stem cells. It is also utilized in combination with E-cadherin to study the morphological and phenotypic changes in cells undergoing epithelial-mesenchymal transition during development and tumor metastasis. In addition, vimentin antibody is a valuable reagent to stain neuronal precursors and developing radial glia cells.

实验应用

应用说明

*最佳稀释倍数与浓度应由研究人员确认

Suggested dilution	Recommended dilution
WB	1:5000-1:50000
ICC/IF	1:100-1:1000
IHC-P	1:100-1:1000
IHC-Fr	Assay dependent
IP	1:100-1:500
ELISA	Assay dependent
Sandwich ELISA	Assay dependent
IHC (Free Floating)	Assay dependent

Note : Capture : GTX629743 / GTX629744, Detection : GTX100619

以下为常规应用缩写的中文注解

WB: 免疫印迹

ICC/IF: 细胞染色

IHC-P: 石蜡切片

IHC-Fr: 冰冻切片

属性

形式	Liquid
存储溶液	PBS, 1% BSA, 20% Glycerol
保存剂	0.025% ProClin 300

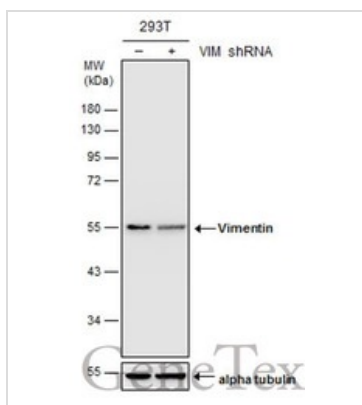


For full product information, images and publications, please visit our [website](#).

Date 2025 / 06 / 18 Page 1 of 2

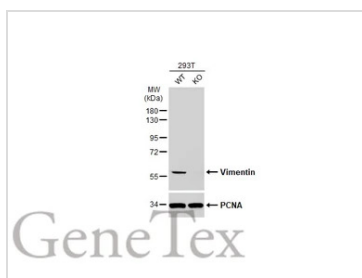
存放说明	Store as concentrated solution. Centrifuge briefly prior to opening vial. For short-term storage (1-2 weeks), store at 4°C. For long-term storage, aliquot and store at -20°C or below. Avoid multiple freeze-thaw cycles.
浓度	0.16 mg/ml (Please refer to the vial label for the specific concentration.)
偶联	Unconjugated
RRID	AB_1952557
注意事项	仅供实验室使用。不适用于人类或动物的任何临床、治疗或诊断用途。不适合动物或人类食用。

產品图片



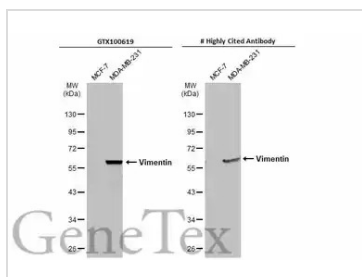
GTx100619 WB Image

Non-transfected (–) and transfected (+) 293T whole cell extracts (30 µg) were separated by 10% SDS-PAGE, and the membrane was blotted with Vimentin antibody (GTx100619) diluted at 1:20000.



GTx100619 WB Image

Wild-type (WT) and Vimentin knockout (KO) 293T cell extracts (30 µg) were separated by 10% SDS-PAGE, and the membrane was blotted with Vimentin antibody (GTx100619) diluted at 1:50000. The HRP-conjugated anti-rabbit IgG antibody (GTx213110-01) was used to detect the primary antibody.



GTx100619 WB Image

Various whole cell extracts (30 µg) were separated by 10% SDS-PAGE, and the membranes were blotted with Vimentin antibody (GTx100619) diluted at 1:5000 and competitor's antibody diluted at 1:5000. The HRP-conjugated anti-rabbit IgG antibody (GTx213110-01) was used to detect the primary antibody.

*The competitor is not affiliated with GeneTex and does not endorse this product.



For full product information, images and publications, please visit our [website](https://www.genetex.com).