

Desmin antibody

Cat. No. GTX103557

宿主	Rabbit
克隆	Polyclonal
同种型	IgG
实验应用	WB, ICC/IF, IHC-P, IHC-Fr, FCM
种属反应	Human, Mouse, Rat, Cat, Dog, Chicken, Pig

引用文献 (18)

实验应用

应用说明

*最佳稀释倍数与浓度应由研究人员确认

Suggested dilution	Recommended dilution
WB	1:500-1:10000
ICC/IF	Assay dependent
IHC-P	1:100-1:1000
IHC-Fr	Assay dependent
FCM	Assay dependent

以下为常规应用缩写的中文注解

WB: 免疫印迹

ICC/IF: 细胞染色

IHC-P: 石蜡切片

IHC-Fr: 冰冻切片

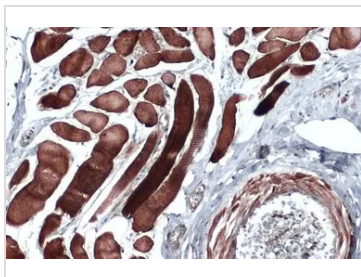
属性

形式	Liquid
存储溶液	PBS, 20% Glycerol
保存剂	0.025% ProClin 300
存放说明	Store as concentrated solution. Centrifuge briefly prior to opening vial. For short-term storage (1-2 weeks), store at 4°C. For long-term storage, aliquot and store at -20°C or below. Avoid multiple freeze-thaw cycles.
浓度	1.42 mg/ml (Please refer to the vial label for the specific concentration.)
偶联	Unconjugated
RRID	AB_1950112
注意事项	仅供实验室使用。不适用于人类或动物的任何临床、治疗或诊断用途。不适合动物或人类食用。

For full product information, images and publications, please visit our [website](#).

Date 2025 / 07 / 09 Page 1 of 2

產品圖片



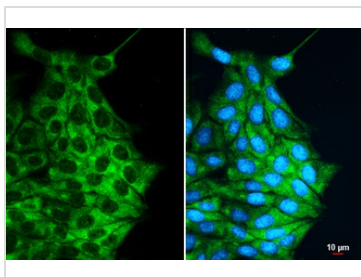
GTX103557 IHC-P Image

Desmin antibody detects Desmin protein at cell membrane and cytoplasm by immunohistochemical analysis.

Sample: Paraffin-embedded dog muscle.

Desmin stained by Desmin antibody (GTX103557) diluted at 1:500.

Antigen Retrieval: Citrate buffer, pH 6.0, 15 min

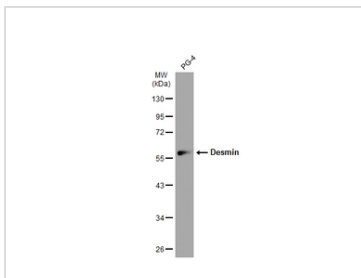


GTX103557 ICC/IF Image

Desmin antibody detects Desmin protein at cytoplasm by immunofluorescent analysis.

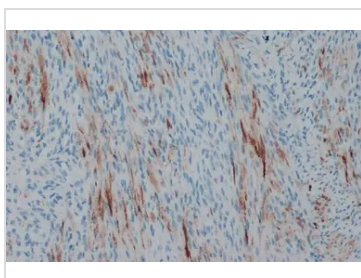
Sample: MDCK cells were fixed in 4% paraformaldehyde at RT for 15 min.

Green: Desmin stained by Desmin antibody (GTX103557) diluted at 1:500.



GTX103557 WB Image

Whole cell extract (30 µg) was separated by 10% SDS-PAGE, and the membrane was blotted with Desmin antibody (GTX103557) diluted at 1:500. The HRP-conjugated anti-rabbit IgG antibody (GTX213110-01) was used to detect the primary antibody.



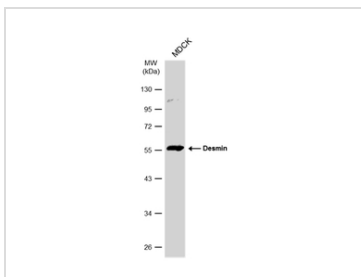
GTX103557 IHC-P Image

Desmin antibody detects Desmin protein at cell membrane and cytoplasm by immunohistochemical analysis.

Sample: Paraffin-embedded dog malignant soft tissue sarcoma.

Desmin stained by Desmin antibody (GTX103557) diluted at 1:500.

Antigen Retrieval: Citrate buffer, pH 6.0, 15 min



GTX103557 WB Image

Whole cell extract (30 µg) was separated by 10% SDS-PAGE, and the membrane was blotted with Desmin antibody (GTX103557) diluted at 1:500. The HRP-conjugated anti-rabbit IgG antibody (GTX213110-01) was used to detect the primary antibody.



For full product information, images and publications, please visit our [website](https://www.genetex.com).