

RFC2 antibody

Cat. No. GTX105087

宿主	Rabbit
克隆	Polyclonal
同种型	IgG
实验应用	WB, ICC/IF
种属反应	Human

引用文献 (1)

实验应用

应用说明

*最佳稀释倍数与浓度应由研究人员确认

Suggested dilution	Recommended dilution
WB	1:500-1:3000
ICC/IF	1:100-1:1000

以下为常规应用缩写的中文注解

WB: 免疫印迹

ICC/IF: 细胞染色

IHC-P: 石蜡切片

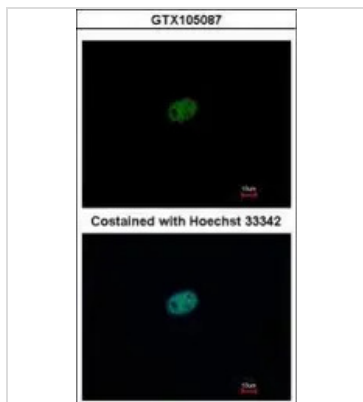
IHC-Fr: 冰冻切片

属性

形式	Liquid
存储溶液	0.1M Tris, 0.1M Glycine, 10% Glycerol
保存剂	0.01% Thimerosal
存放说明	Store as concentrated solution. Centrifuge briefly prior to opening vial. For short-term storage (1-2 weeks), store at 4°C. For long-term storage, aliquot and store at -20°C or below. Avoid multiple freeze-thaw cycles.
浓度	0.43 mg/ml (Please refer to the vial label for the specific concentration.)
偶联	Unconjugated
RRID	AB_1951691
注意事项	仅供实验室使用。不适用于人类或动物的任何临床, 治疗或诊断用途。不适合动物或人类食用。

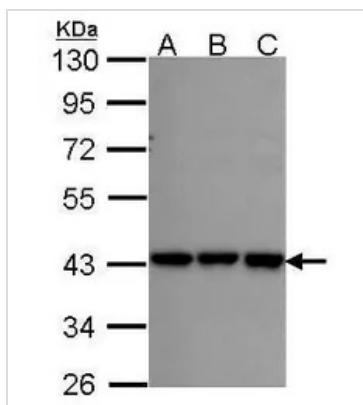
For full product information, images and publications, please visit our [website](#).

產品圖片



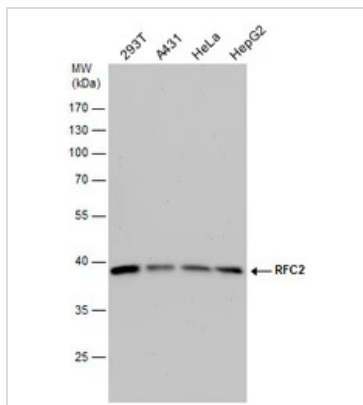
GTX105087 ICC/IF Image

Immunofluorescence analysis of paraformaldehyde-fixed HeLa, using RFC2(GTX105087) antibody at 1:500 dilution.



GTX105087 WB Image

Sample (30 ug of whole cell lysate)
 A: A431 (GTX27909)
 B: H1299
 C: HeLa
 10% SDS PAGE
 RFC2 antibody
 GTX105087 diluted at 1:1000



GTX105087 WB Image

RFC2 antibody detects RFC2 protein by western blot analysis. Various whole cell extracts (30 µg) were separated by 10% SDS-PAGE, and the membrane was blotted with RFC2 antibody (GTX105087) diluted by 1:1000.



For full product information, images and publications, please visit our [website](#).