

GPX7 antibody [N1C3]

Cat. No. GTX105683

宿主	Rabbit
克隆	Polyclonal
同种型	IgG
实验应用	WB, IHC-P
种属反应	Human, Mouse

引用文献 (1)

实验应用

应用说明

*最佳稀释倍数与浓度应由研究人员确认

Suggested dilution	Recommended dilution
WB	1:500-1:3000
IHC-P	1:100-1:1000

以下为常规应用缩写的中文注解

WB: 免疫印迹

ICC/IF: 细胞染色

IHC-P: 石蜡切片

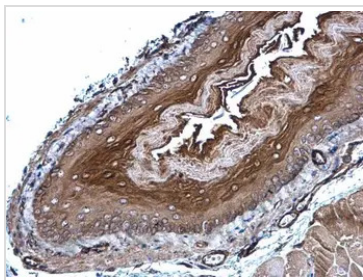
IHC-Fr: 冰冻切片

属性

形式	Liquid
存储溶液	0.1M Tris, 0.1M Glycine, 10% Glycerol
保存剂	0.01% Thimerosal
存放说明	Store as concentrated solution. Centrifuge briefly prior to opening vial. For short-term storage (1-2 weeks), store at 4°C. For long-term storage, aliquot and store at -20°C or below. Avoid multiple freeze-thaw cycles.
浓度	0.52 mg/ml (Please refer to the vial label for the specific concentration.)
偶联	Unconjugated
RRID	AB_1950448
注意事项	仅供实验室使用。不适用于人类或动物的任何临床, 治疗或诊断用途。不适合动物或人类食用。

For full product information, images and publications, please visit our [website](#).

產品圖片

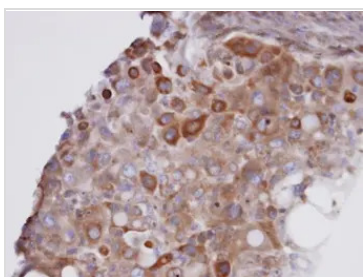
**GTx105683 IHC-P Image**

GPX7 antibody [N1C3] detects GPX7 protein at cytoplasm on mouse esophagus by immunohistochemical analysis.

Sample: Paraffin-embedded mouse esophagus.

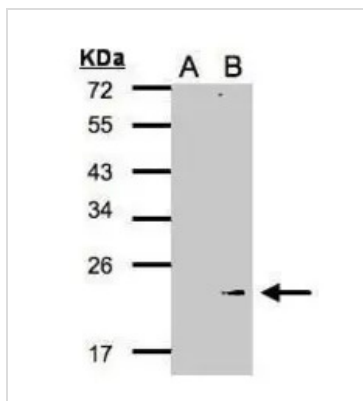
GPX7 antibody [N1C3] (GTx105683) diluted at 1:500.

Antigen Retrieval: Trilogy™ (EDTA based, pH 8.0) buffer, 15min

**GTx105683 IHC-P Image**

Immunohistochemical analysis of paraffin-embedded H441 xenograft, using GPX7 (GTx105683) antibody at 1:100 dilution.

Antigen Retrieval: Trilogy™ (EDTA based, pH 8.0) buffer, 15min

**GTx105683 WB Image**

Western Blot analysis of GPX7 expression in transfected 293T cell line by GPX7 polyclonal antibody.

A: Non-transfected lysate.

B: GPX7 transfected lysate.

12% SDS PAGE

GTx105683 diluted at 1:500

The HRP-conjugated anti-rabbit IgG antibody (GTx213110-01) was used to detect the primary antibody.



For full product information, images and publications, please visit our [website](#).