

WBSCR22 antibody

Cat. No. GTX105840

宿主	Rabbit
克隆	Polyclonal
同种型	IgG
实验应用	WB, ICC/IF, IHC-P, IP
种属反应	Human, Mouse

引用文献 (4)

 产品评论 (1)

实验应用

应用说明

*最佳稀释倍数与浓度应由研究人员确认

Suggested dilution	Recommended dilution
WB	1:500-1:3000
ICC/IF	1:100-1:1000
IHC-P	1:100-1:1000
IP	1:500-1:1000

以下为常规应用缩写的中文注解

WB: 免疫印迹

ICC/IF: 细胞染色

IHC-P: 石蜡切片

IHC-Fr: 冰冻切片

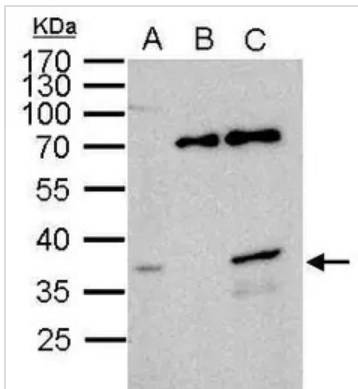
属性

形式	Liquid
存储溶液	0.1M Tris, 0.1M Glycine, 10% Glycerol
保存剂	0.01% Thimerosal
存放说明	Store as concentrated solution. Centrifuge briefly prior to opening vial. For short-term storage (1-2 weeks), store at 4°C. For long-term storage, aliquot and store at -20°C or below. Avoid multiple freeze-thaw cycles.
浓度	0.42 mg/ml (Please refer to the vial label for the specific concentration.)
偶联	Unconjugated
RRID	AB_1952564
注意事项	仅供实验室使用。不适用于人类或动物的任何临床、治疗或诊断用途。不适合动物或人类食用。

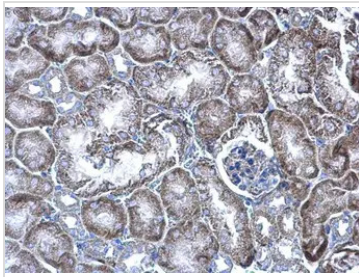


For full product information, images and publications, please visit our [website](#).

產品圖片

**GTX105840 IP Image**

WBSCR22 antibody immunoprecipitates WBSCR22 protein in IP experiments. IP Sample: 1000 µg HeLa whole cell lysate/extract A. 40 µg HeLa whole cell lysate/extract B. Control with 2.5 µg of preimmune rabbit IgG C. Immunoprecipitation of WBSCR22 protein by 2.5 µg of WBSCR22 antibody (GTX105840) 12% SDS-PAGE The immunoprecipitated WBSCR22 protein was detected by WBSCR22 antibody (GTX105840) diluted at 1:1000. EasyBlot anti-rabbit IgG (GTX221666-01) was used as a secondary reagent.

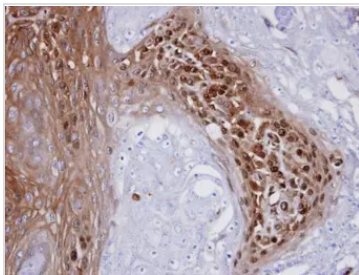
**GTX105840 IHC-P Image**

WBSCR22 antibody detects WBSCR22 protein at cytoplasm on mouse kidney by immunohistochemical analysis.

Sample: Paraffin-embedded mouse kidney.

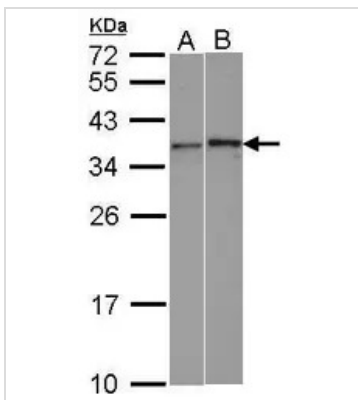
WBSCR22 antibody (GTX105840) diluted at 1:500.

Antigen Retrieval: Trilogy™ (EDTA based, pH 8.0) buffer, 15min

**GTX105840 IHC-P Image**

Immunohistochemical analysis of paraffin-embedded CA922 xenograft, using WBSCR22 (GTX105840) antibody at 1:100 dilution.

Antigen Retrieval: Trilogy™ (EDTA based, pH 8.0) buffer, 15min

**GTX105840 WB Image**

Sample (30 ug of whole cell lysate)

A: HeLa

B: HCT116

12% SDS PAGE

GTX105840 diluted at 1:1000



For full product information, images and publications, please visit our [website](#).