

## FBXO4 antibody

**Cat. No. GTX107178**

宿主	Rabbit
克隆	Polyclonal
同种型	IgG
实验应用	WB, ICC/IF
种属反应	Human

## 实验应用

## 应用说明

\*最佳稀释倍数与浓度应由研究人员确认

Suggested dilution	Recommended dilution
WB	1:1000-1:10000
ICC/IF	1:100-1:1000

以下为常规应用缩写的中文注解

WB: 免疫印迹

ICC/IF: 细胞染色

IHC-P: 石蜡切片

IHC-Fr: 冰冻切片

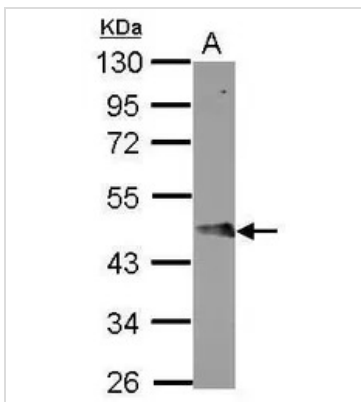
## 属性

形式	Liquid
存储溶液	PBS, 1% BSA, 20% Glycerol
保存剂	0.01% Thimerosal
存放说明	Store as concentrated solution. Centrifuge briefly prior to opening vial. For short-term storage (1-2 weeks), store at 4°C. For long-term storage, aliquot and store at -20°C or below. Avoid multiple freeze-thaw cycles.
浓度	1 mg/ml (Please refer to the vial label for the specific concentration.)
偶联	Unconjugated
RRID	AB_11177675
注意事项	仅供实验室使用。不适用于人类或动物的任何临床, 治疗或诊断用途。不适合动物或人类食用。



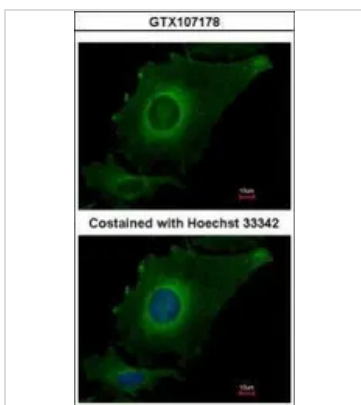
For full product information, images and publications, please visit our [website](#).

產品圖片



**GTX107178 WB Image**

Sample (30 ug of whole cell lysate)  
 A: HL-60  
 10% SDS PAGE  
 GTX107178 diluted at 1:5000



**GTX107178 ICC/IF Image**

Immunofluorescence analysis of methanol-fixed HeLa, using FBXO4(GTX107178) antibody at 1:500 dilution.



For full product information, images and publications, please visit our [website](#).