

PI3 kinase p101 antibody [C2C3-2], C-term

Cat. No. GTX107813

宿主	Rabbit
克隆	Polyclonal
同种型	IgG
实验应用	IHC-P
种属反应	Human, Rat

实验应用

应用说明

*最佳稀释倍数与浓度应由研究人员确认

Suggested dilution	Recommended dilution
IHC-P	1:100-1:1000

以下为常规应用缩写的中文注解

WB: 免疫印迹

ICC/IF: 细胞染色

IHC-P: 石蜡切片

IHC-Fr: 冰冻切片

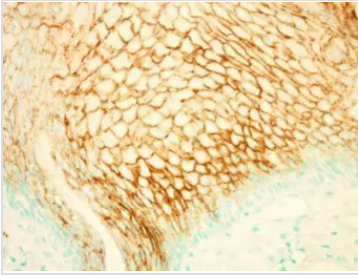
属性

形式	Liquid
存储溶液	0.1M Tris, 0.1M Glycine, 10% Glycerol
保存剂	0.01% Thimerosal
存放说明	Store as concentrated solution. Centrifuge briefly prior to opening vial. For short-term storage (1-2 weeks), store at 4°C. For long-term storage, aliquot and store at -20°C or below. Avoid multiple freeze-thaw cycles.
浓度	0.99 mg/ml (Please refer to the vial label for the specific concentration.)
偶联	Unconjugated
RRID	AB_2037683
注意事项	仅供实验室使用。不适用于人类或动物的任何临床，治疗或诊断用途。不适合动物或人类食用。

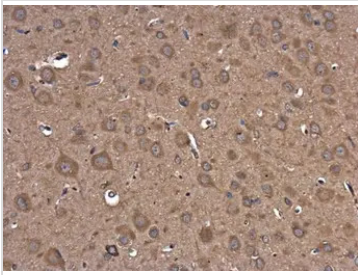


For full product information, images and publications, please visit our [website](#).

產品圖片

**GTX107813 IHC-P Image**

Immunohistochemical staining of FFPE normal human esophagus using anti-PI3K p101 antibody (GTX107813). Nuclei are counterstained with methyl green.

**GTX107813 IHC-P Image**

PI3 kinase p101 antibody [C2C3-2], C-term detects PI3 kinase p101 protein at cytoplasm in rat brain by immunohistochemical analysis.

Sample: Paraffin-embedded rat brain.

PI3 kinase p101 antibody [C2C3-2], C-term (GTX107813) diluted at 1:250.

Antigen Retrieval: Citrate buffer, pH 6.0, 15 min



For full product information, images and publications, please visit our [website](#).