

## PRAK antibody [N3C3]

Cat. No. GTX107938

|      |            |
|------|------------|
| 宿主   | Rabbit     |
| 克隆   | Polyclonal |
| 同种型  | IgG        |
| 实验应用 | WB, ICC/IF |
| 种属反应 | Human      |

## 实验应用

## 应用说明

\*最佳稀释倍数与浓度应由研究人员确认

| Suggested dilution | Recommended dilution |
|--------------------|----------------------|
| WB                 | 1:500-1:3000         |
| ICC/IF             | 1:100-1:1000         |

以下为常规应用缩写的中文注解

WB: 免疫印迹

ICC/IF: 细胞染色

IHC-P: 石蜡切片

IHC-Fr: 冰冻切片

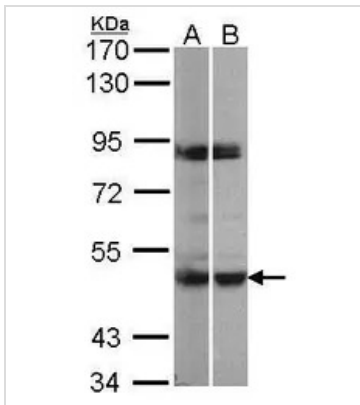
## 属性

|      |  |
|------|--|
| 形式   | Liquid   |
| 存储溶液 | 0.1M Tris, 0.1M Glycine, 10% Glycerol  |
| 保存剂  | 0.01% Thimerosal   |
| 存放说明 | Store as concentrated solution. Centrifuge briefly prior to opening vial. For short-term storage (1-2 weeks), store at 4°C. For long-term storage, aliquot and store at -20°C or below. Avoid multiple freeze-thaw cycles. |
| 浓度   | 0.62 mg/ml (Please refer to the vial label for the specific concentration.)  |
| 偶联   | Unconjugated   |
| RRID | AB_1950886   |
| 注意事项 | 仅供实验室使用。不适用于人类或动物的任何临床, 治疗或诊断用途。不适合动物或人类食用。  |



For full product information, images and publications, please visit our [website](#).

產品圖片



**GTX107938 WB Image**

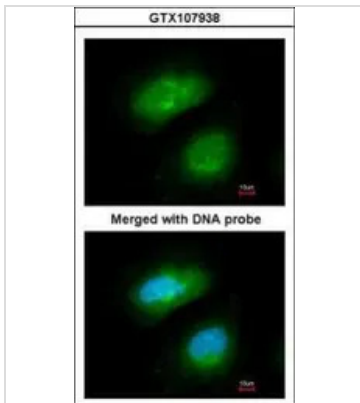
Sample(30 µg of whole cell lysate)

A:293T

B:H1299

7.5% SDS PAGE

GTX107938 diluted at 1:500



**GTX107938 ICC/IF Image**

Immunofluorescence analysis of paraformaldehyde-fixed HeLa, using PRAK(GTX107938) antibody at 1:200 dilution.



For full product information, images and publications, please visit our [website](#).