

BMP8A antibody [C3], C-term

Cat. No. GTX108555

宿主	Rabbit
克隆	Polyclonal
同种型	IgG
实验应用	WB, ICC/IF
种属反应	Human, Mouse

实验应用

应用说明

*最佳稀释倍数与浓度应由研究人员确认

Suggested dilution	Recommended dilution
WB	1:500-1:3000
ICC/IF	1:100-1:1000

以下为常规应用缩写的中文注解

WB: 免疫印迹

ICC/IF: 细胞染色

IHC-P: 石蜡切片

IHC-Fr: 冰冻切片

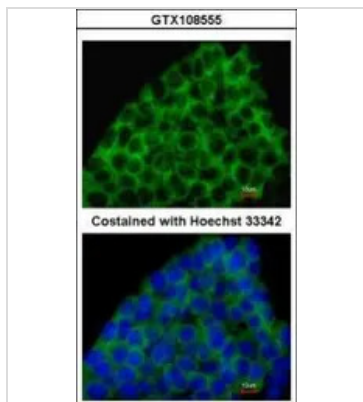
属性

形式	Liquid
存储溶液	0.1M Tris, 0.1M Glycine, 10% Glycerol; 1% BSA
保存剂	0.01% Thimerosal
存放说明	Store as concentrated solution. Centrifuge briefly prior to opening vial. For short-term storage (1-2 weeks), store at 4°C. For long-term storage, aliquot and store at -20°C or below. Avoid multiple freeze-thaw cycles.
浓度	0.38 mg/ml (Please refer to the vial label for the specific concentration.)
偶联	Unconjugated
RRID	AB_1949751
注意事项	仅供实验室使用。不适用于人类或动物的任何临床, 治疗或诊断用途。不适合动物或人类食用。



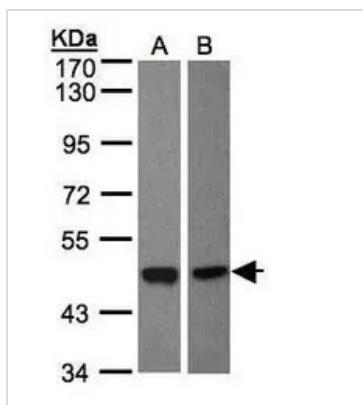
For full product information, images and publications, please visit our [website](#).

產品圖片



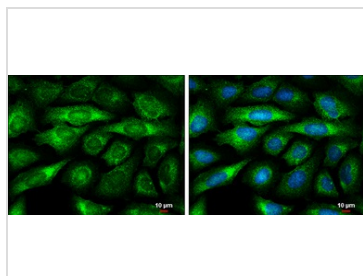
GTX108555 ICC/IF Image

Immunofluorescence analysis of paraformaldehyde-fixed mouse ESC D3, using BMP8A(GTX108555) antibody at 1:200 dilution.



GTX108555 WB Image

Sample(30 µg of whole cell lysate)
 A:H1299
 B:Raji (GTX27908)
 7.5% SDS PAGE
 GTX108555 diluted at 1:500



GTX108555 ICC/IF Image

BMP8A antibody [C3], C-term detects BMP8A protein by immunofluorescent analysis.
 Sample: U2OS cells were fixed in 4% paraformaldehyde at RT for 15 min.
 Green: BMP8A protein stained by BMP8A antibody [C3], C-term (GTX108555) diluted at 1:500.
 Blue: Hoechst 33342 staining.
 Scale bar = 10 µm.



For full product information, images and publications, please visit our [website](#).