

ZO-1 antibody

Cat. No. GTX108592

宿主	Rabbit
克隆	Polyclonal
同种型	IgG
实验应用	WB, ICC/IF, IHC-P, IHC-Fr
种属反应	Human, Mouse, Bovine, Dog, Pig, Monkey

引用文献 (21)

★★★★★ 产品评论 (1)

实验应用

应用说明

*最佳稀释倍数与浓度应由研究人员确认

Suggested dilution	Recommended dilution
WB	1:500-1:3000
ICC/IF	Assay dependent
IHC-P	1:100-1:1000
IHC-Fr	Assay dependent

Note : The use of GTX108592 for mouse is based on IHC-P testing. For WB using mouse samples, we recommend GTX108613

以下为常规应用缩写的中文注解

WB: 免疫印迹

ICC/IF: 细胞染色

IHC-P: 石蜡切片

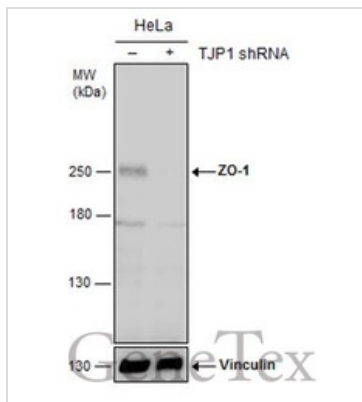
IHC-Fr: 冰冻切片

属性

形式	Liquid
存储溶液	PBS, 1% BSA, 20% Glycerol
保存剂	0.025% ProClin 300
存放说明	Store as concentrated solution. Centrifuge briefly prior to opening vial. For short-term storage (1-2 weeks), store at 4°C. For long-term storage, aliquot and store at -20°C or below. Avoid multiple freeze-thaw cycles.
浓度	0.19 mg/ml (Please refer to the vial label for the specific concentration.)
偶联	Unconjugated
RRID	AB_1952260
注意事项	仅供实验室使用。不适用于人类或动物的任何临床、治疗或诊断用途。不适合动物或人类食用。

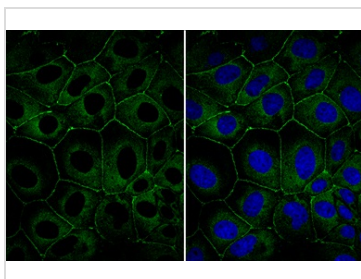
For full product information, images and publications, please visit our [website](#).

產品圖片



GTX108592 WB Image

Non-transfected (–) and transfected (+) HeLa whole cell extracts (30 µg) were separated by 5% SDS-PAGE, and the membrane was blotted with ZO-1 antibody (GTX108592) diluted at 1:500. The HRP-conjugated anti-rabbit IgG antibody (GTX213110-01) was used to detect the primary antibody.

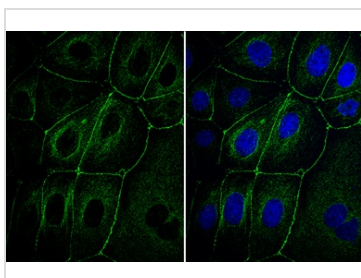


GTX108592 ICC/IF Image

ZO-1 antibody detects ZO-1 protein at cell membrane and cytoplasm by immunofluorescent analysis.

Sample: MDCK cells were fixed in 4% paraformaldehyde at RT for 15 min.

Green: ZO-1 stained by ZO-1 antibody (GTX108592) diluted at 1:1000.

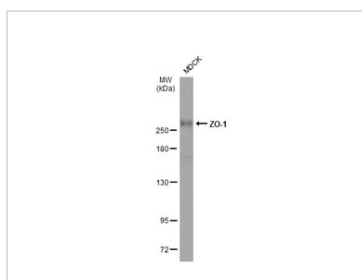


GTX108592 ICC/IF Image

ZO-1 antibody detects ZO-1 protein at cell membrane and cytoplasm by immunofluorescent analysis.

Sample: MDCK cells were fixed in 4% paraformaldehyde at RT for 15 min.

Green: ZO-1 stained by ZO-1 antibody (GTX108592) diluted at 1:1000.



GTX108592 WB Image

Whole cell extract (30 µg) was separated by 5% SDS-PAGE, and the membrane was blotted with ZO-1 antibody (GTX108592) diluted at 1:1000. The HRP-conjugated anti-rabbit IgG antibody (GTX213110-01) was used to detect the primary antibody.



For full product information, images and publications, please visit our [website](https://www.genetex.com).