

## CBX4 antibody [C3], C-term

Cat. No. GTX109662

宿主	Rabbit
克隆	Polyclonal
同种型	IgG
实验应用	WB, IHC-P
种属反应	Human, Mouse

引用文献 ( 1 )

## 实验应用

## 应用说明

\*最佳稀释倍数与浓度应由研究人员确认

Suggested dilution	Recommended dilution
WB	1:1000
IHC-P	Assay dependent

以下为常规应用缩写的中文注解

WB: 免疫印迹

ICC/IF: 细胞染色

IHC-P: 石蜡切片

IHC-Fr: 冰冻切片

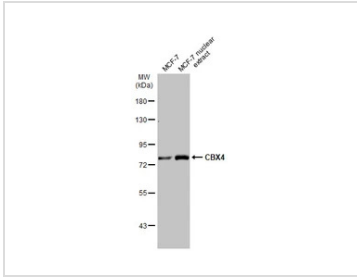
## 属性

形式	Liquid
存储溶液	PBS, 20% Glycerol
保存剂	0.01% Thimerosal
存放说明	Store as concentrated solution. Centrifuge briefly prior to opening vial. For short-term storage (1-2 weeks), store at 4°C. For long-term storage, aliquot and store at -20°C or below. Avoid multiple freeze-thaw cycles.
浓度	1 mg/ml (Please refer to the vial label for the specific concentration.)
偶联	Unconjugated
RRID	AB_1949865
注意事项	仅供实验室使用。不适用于人类或动物的任何临床, 治疗或诊断用途。不适合动物或人类食用。

For full product information, images and publications, please visit our [website](#).

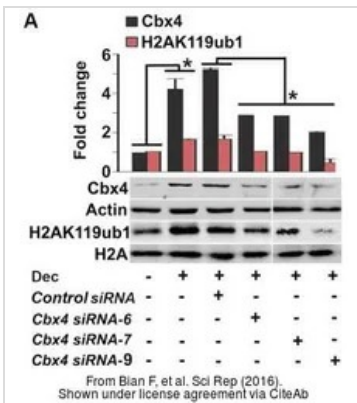
Date 2025 / 05 / 27 Page 1 of 2

## 產品圖片



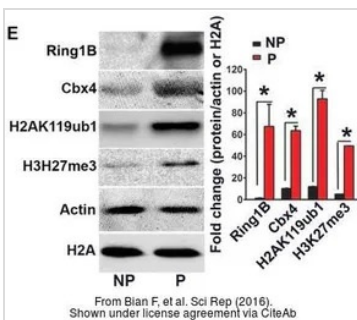
## GTX109662 WB Image

MCF-7 whole cell and nuclear extracts (30 µg) were separated by 7.5% SDS-PAGE, and the membrane was blotted with CBX4 antibody [C3], C-term (GTX109662) diluted at 1:1000. The HRP-conjugated anti-rabbit IgG antibody (GTX213110-01) was used to detect the primary antibody.



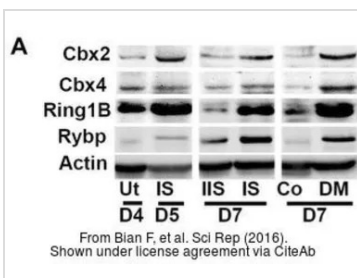
## GTX109662 WB Image

The data was published in the journal Sci Rep in 2016. [PMID: 27181215](https://pubmed.ncbi.nlm.nih.gov/27181215/)



## GTX109662 WB Image

The data was published in the journal Sci Rep in 2016. [PMID: 27181215](https://pubmed.ncbi.nlm.nih.gov/27181215/)



## GTX109662 WB Image

The data was published in the journal Sci Rep in 2016. [PMID: 27181215](https://pubmed.ncbi.nlm.nih.gov/27181215/)



For full product information, images and publications, please visit our [website](https://www.genetex.com).