

SLC25A6 antibody

Cat. No. GTX110983

宿主	Rabbit
克隆	Polyclonal
同种型	IgG
实验应用	WB, ICC/IF, IHC-P, IP
种属反应	Human, Mouse, Rat

实验应用

应用说明

*最佳稀释倍数与浓度应由研究人员确认

Suggested dilution	Recommended dilution
WB	1:500-1:3000
ICC/IF	1:100-1:1000
IHC-P	1:100-1:1000
IP	1:100-1:500

以下为常规应用缩写的中文注解

WB: 免疫印迹

ICC/IF: 细胞染色

IHC-P: 石蜡切片

IHC-Fr: 冰冻切片

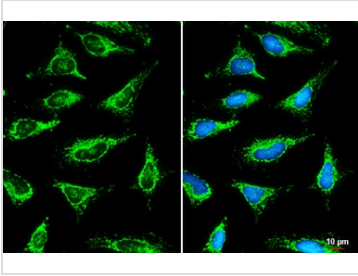
属性

形式	Liquid
存储溶液	PBS, 20% Glycerol
保存剂	0.025% ProClin 300
存放说明	Store as concentrated solution. Centrifuge briefly prior to opening vial. For short-term storage (1-2 weeks), store at 4°C. For long-term storage, aliquot and store at -20°C or below. Avoid multiple freeze-thaw cycles.
浓度	1.17 mg/ml (Please refer to the vial label for the specific concentration.)
偶联	Unconjugated
RRID	AB_11169465
注意事项	仅供实验室使用。不适用于人类或动物的任何临床, 治疗或诊断用途。不适合动物或人类食用。



For full product information, images and publications, please visit our [website](#).

產品圖片

**GTX110983 ICC/IF Image**

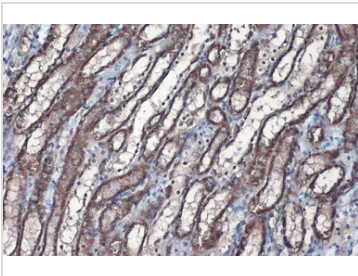
SLC25A6 antibody detects SLC25A6 protein at mitochondria by immunofluorescent analysis.

Sample: HeLa cells were fixed in ice-cold MeOH for 5 min.

Green: SLC25A6 stained by SLC25A6 antibody (GTX110983) diluted at 1:500.

Blue: Fluoroshield with DAPI (GTX30920).

Scale bar = 10 µm.

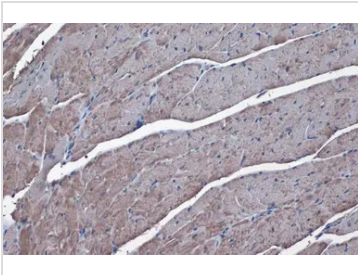
**GTX110983 IHC-P Image**

SLC25A6 antibody detects SLC25A6 protein at mitochondria by immunohistochemical analysis.

Sample: Paraffin-embedded rat kidney.

SLC25A6 stained by SLC25A6 antibody (GTX110983) diluted at 1:1000.

Antigen Retrieval: Citrate buffer, pH 6.0, 15 min

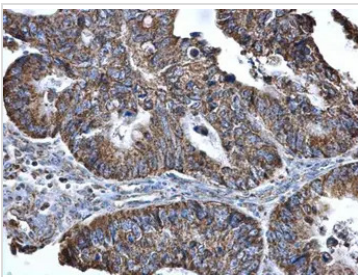
**GTX110983 IHC-P Image**

SLC25A6 antibody detects SLC25A6 protein at mitochondria by immunohistochemical analysis.

Sample: Paraffin-embedded mouse heart.

SLC25A6 stained by SLC25A6 antibody (GTX110983) diluted at 1:1000.

Antigen Retrieval: Citrate buffer, pH 6.0, 15 min

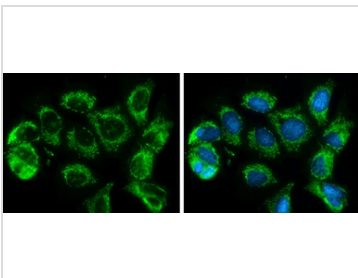
**GTX110983 IHC-P Image**

SLC25A6 antibody detects SLC25A6 protein at mitochondria in human colon cancer by immunohistochemical analysis.

Sample: Paraffin-embedded human colon cancer.

SLC25A6 antibody (GTX110983) diluted at 1:500.

Antigen Retrieval: Citrate buffer, pH 6.0, 15 min

**GTX110983 ICC/IF Image**

SLC25A6 antibody detects SLC25A6 protein at mitochondria by immunofluorescent analysis.

Sample: MCF7 cells were fixed in 4% paraformaldehyde at RT for 15 min.

Green: SLC25A6 protein stained by SLC25A6 antibody (GTX110983) diluted at 1:500.

Blue: Hoechst 33342 staining.



For full product information, images and publications, please visit our [website](#).