

PSKH1 antibody

Cat. No. GTX111473

宿主	Rabbit
克隆	Polyclonal
同种型	IgG
实验应用	WB, ICC/IF, IHC-P
种属反应	Human, Mouse

实验应用

应用说明

*最佳稀释倍数与浓度应由研究人员确认

Suggested dilution	Recommended dilution
WB	1:500-1:3000
ICC/IF	1:100-1:1000
IHC-P	1:100-1:1000

以下为常规应用缩写的中文注解

WB: 免疫印迹

ICC/IF: 细胞染色

IHC-P: 石蜡切片

IHC-Fr: 冰冻切片

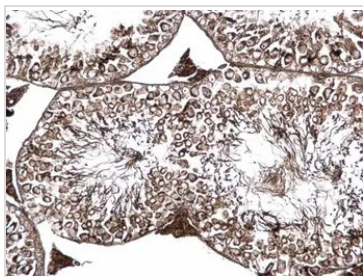
属性

形式	Liquid
存储溶液	PBS, 20% Glycerol
保存剂	0.01% Thimerosal
存放说明	Store as concentrated solution. Centrifuge briefly prior to opening vial. For short-term storage (1-2 weeks), store at 4°C. For long-term storage, aliquot and store at -20°C or below. Avoid multiple freeze-thaw cycles.
浓度	1 mg/ml (Please refer to the vial label for the specific concentration.)
偶联	Unconjugated
RRID	AB_2885304
注意事项	仅供实验室使用。不适用于人类或动物的任何临床, 治疗或诊断用途。不适合动物或人类食用。



For full product information, images and publications, please visit our [website](#).

產品圖片

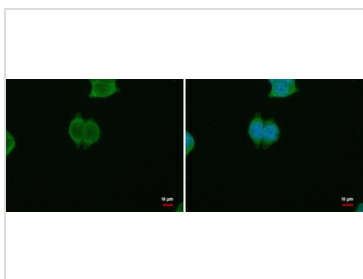
**GTX111473 IHC-P Image**

PSKH1 antibody detects PSKH1 protein at cytosol on mouse testis by immunohistochemical analysis.

Sample: Paraffin-embedded mouse testis.

PSKH1 antibody (GTX111473) dilution: 1:500.

Antigen Retrieval: Trilogy™ (EDTA based, pH 8.0) buffer, 15min

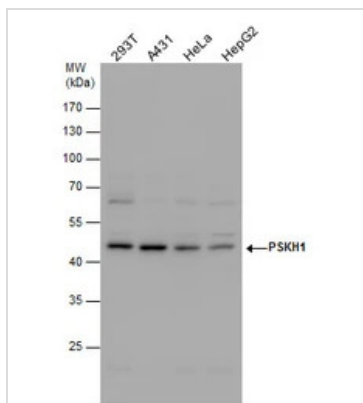
**GTX111473 ICC/IF Image**

PSKH1 antibody detects PSKH1 protein at cytoplasm by immunofluorescent analysis.

Sample: HCT116 cells were fixed in 4% paraformaldehyde at RT for 15 min.

Green: PSKH1 protein stained by PSKH1 antibody (GTX111473) diluted at 1:500.

Blue: Hoechst 33342 staining.

**GTX111473 WB Image**

PSKH1 antibody detects PSKH1 protein by western blot analysis. Various whole cell extracts (30 µg) were separated by 10% SDS-PAGE, and the membrane was blotted with PSKH1 antibody (GTX111473) diluted by 1:1000.



For full product information, images and publications, please visit our [website](#).