

Fibronectin antibody [N1N2], N-term

Cat. No. GTX112794

宿主	Rabbit
克隆	Polyclonal
同种型	IgG
实验应用	WB, ICC/IF, IHC-P, IHC-Fr, IP, ELISA
种属反应	Human, Mouse, Rat

引用文献 (65)

产品说明

摘要

Fibronectin antibody recognizes fibronectin protein, which is an extracellular glycoprotein (predicted molecular weight of 272 kDa) that exists in two forms. Insoluble fibronectin, made by fibroblasts, chondrocytes, endothelial cells, macrophages, and certain epithelial cells, binds to multiple matrix proteins such as collagens, syndecans, and integrins to mediate cell adhesion and migration. Soluble fibronectin, produced by hepatocytes as a component of vertebrate blood plasma, is involved in blood clotting and wound repair.

实验应用

应用说明

*最佳稀释倍数与浓度应由研究人员确认

Suggested dilution	Recommended dilution
WB	1:500-1:3000
ICC/IF	1:100-1:1000
IHC-P	1:100-1:1000
IHC-Fr	Assay dependent
IP	1:100-1:500
ELISA	1:1000-1:10000

以下为常规应用缩写的中文注解

WB: 免疫印迹

ICC/IF: 细胞染色

IHC-P: 石蜡切片

IHC-Fr: 冰冻切片

属性

形式	Liquid
存储溶液	PBS, 1% BSA, 20% Glycerol
保存剂	0.025% ProClin 300
存放说明	Store as concentrated solution. Centrifuge briefly prior to opening vial. For short-term storage (1-2 weeks), store at 4°C. For long-term storage, aliquot and store at -20°C or below. Avoid multiple freeze-thaw cycles.

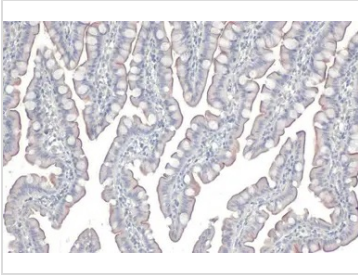


For full product information, images and publications, please visit our [website](#).

Date 2025 / 07 / 24 Page 1 of 2

浓度	0.48 mg/ml (Please refer to the vial label for the specific concentration.)
偶联	Unconjugated
RRID	AB_1950298
注意事项	仅供实验室使用。不适用于人类或动物的任何临床、治疗或诊断用途。不适合动物或人类食用。

產品图片



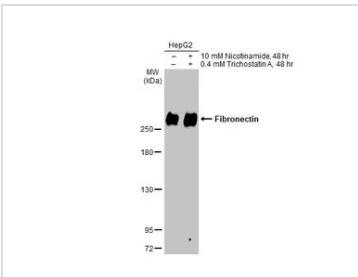
GTX112794 IHC-P Image

Fibronectin antibody [N1N2], N-term detects Fibronectin protein at cell membrane by immunohistochemical analysis.

Sample: Paraffin-embedded rat colon.

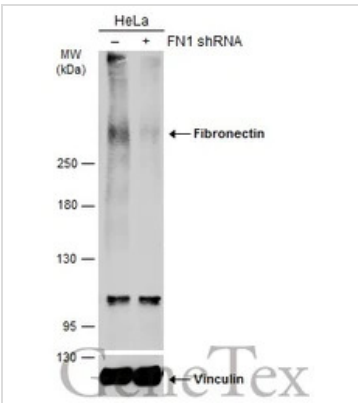
Fibronectin stained by Fibronectin antibody [N1N2], N-term (GTX112794) diluted at 1:500.

Antigen Retrieval: Citrate buffer, pH 6.0, 15 min



GTX112794 WB Image

Untreated (–) and treated (+) HepG2 whole cell extracts (30 µg) were separated by 5% SDS-PAGE, and the membrane was blotted with Fibronectin antibody [N1N2], N-term (GTX112794) diluted at 1:1000. The HRP-conjugated anti-rabbit IgG antibody (GTX213110-01) was used to detect the primary antibody.



GTX112794 WB Image

Non-transfected (–) and transfected (+) HeLa whole cell extracts (30 µg) were separated by 5% SDS-PAGE, and the membrane was blotted with Fibronectin antibody [N1N2], N-term (GTX112794) diluted at 1:2000. The HRP-conjugated anti-rabbit IgG antibody (GTX213110-01) was used to detect the primary antibody, and the signal was developed with Trident ECL plus-Enhanced.



For full product information, images and publications, please visit our [website](https://www.genetex.com).