

## beta 2 Microglobulin antibody

Cat. No. GTX112815

宿主	Rabbit
克隆	Polyclonal
同种型	IgG
实验应用	WB, ICC/IF, IHC-P, IP
种属反应	Human, Mouse, Rat, Marmoset

引用文献 (2)

★★★★★ 产品评论 (2)

## 实验应用

## 应用说明

\*最佳稀释倍数与浓度应由研究人员确认

Suggested dilution	Recommended dilution
WB	1:500-1:3000
ICC/IF	Assay dependent
IHC-P	1:100-1:1000
IP	1:100-1:500

以下为常规应用缩写的中文注解

WB: 免疫印迹

ICC/IF: 细胞染色

IHC-P: 石蜡切片

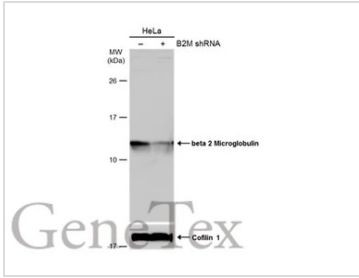
IHC-Fr: 冰冻切片

## 属性

形式	Liquid
存储溶液	PBS, 1% BSA, 20% Glycerol
保存剂	0.025% ProClin 300
存放说明	Store as concentrated solution. Centrifuge briefly prior to opening vial. For short-term storage (1-2 weeks), store at 4°C. For long-term storage, aliquot and store at -20°C or below. Avoid multiple freeze-thaw cycles.
浓度	0.37 mg/ml (Please refer to the vial label for the specific concentration.)
偶联	Unconjugated
RRID	AB_11175135
注意事项	仅供实验室使用。不适用于人类或动物的任何临床、治疗或诊断用途。不适合动物或人类食用。

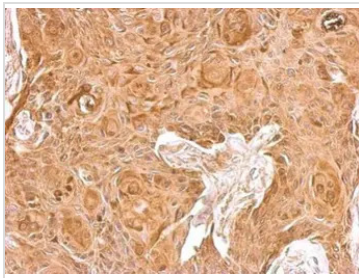
For full product information, images and publications, please visit our [website](#).

## 產品圖片



### GTX112815 WB Image

Non-transfected (-) and transfected (+) HeLa whole cell extracts (50 µg) were separated by 15% SDS-PAGE, and the membrane was blotted with beta 2 Microglobulin antibody (GTX112815) diluted at 1:500. The HRP-conjugated anti-rabbit IgG antibody (GTX213110-01) was used to detect the primary antibody.



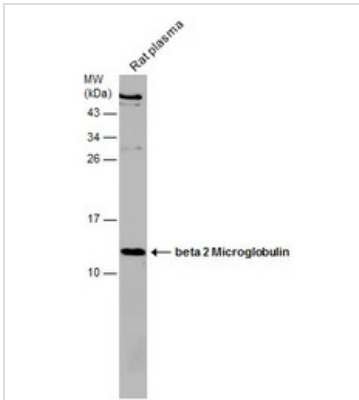
### GTX112815 IHC-P Image

beta 2 Microglobulin antibody detects B2M protein at cytosol on Cal27 xenograft by immunohistochemical analysis.

Sample: Paraffin-embedded Cal27 xenograft.

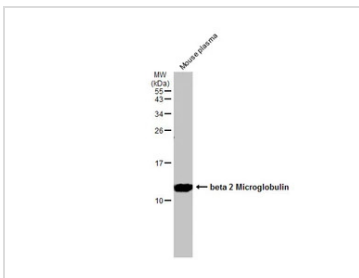
beta 2 Microglobulin antibody (GTX112815) dilution: 1:500.

Antigen Retrieval: Trilogy™ (EDTA based, pH 8.0) buffer, 15min



### GTX112815 WB Image

Rat tissue extract (50 µg) was separated by 15% SDS-PAGE, and the membrane was blotted with beta 2 Microglobulin antibody (GTX112815) diluted at 1:500.



### GTX112815 WB Image

Mouse plasma (50 µg) was separated by 15% SDS-PAGE, and the membrane was blotted with beta 2 Microglobulin antibody (GTX112815) diluted at 1:1500. The HRP-conjugated anti-rabbit IgG antibody (GTX213110-01) was used to detect the primary antibody.



For full product information, images and publications, please visit our [website](https://www.genetex.com).