

SET antibody

Cat. No. GTX113834

宿主	Rabbit
克隆	Polyclonal
同种型	IgG
实验应用	WB, ICC/IF, IP
种属反应	Human, Mouse, Rat

引用文献 (4)

★★★★★ 产品评论 (3)

实验应用

应用说明

*最佳稀释倍数与浓度应由研究人员确认

Suggested dilution	Recommended dilution
WB	1:500-1:3000
ICC/IF	1:100-1:1000
IP	1:100-1:500

以下为常规应用缩写的中文注解

WB: 免疫印迹

ICC/IF: 细胞染色

IHC-P: 石蜡切片

IHC-Fr: 冰冻切片

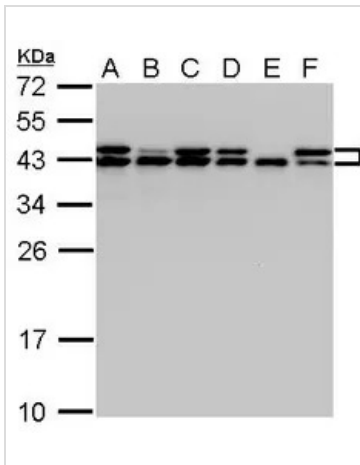
属性

形式	Liquid
存储溶液	PBS, 1% BSA, 20% Glycerol
保存剂	0.01% Thimerosal
存放说明	Store as concentrated solution. Centrifuge briefly prior to opening vial. For short-term storage (1-2 weeks), store at 4°C. For long-term storage, aliquot and store at -20°C or below. Avoid multiple freeze-thaw cycles.
浓度	1 mg/ml (Please refer to the vial label for the specific concentration.)
偶联	Unconjugated
RRID	AB_2037974
注意事项	仅供实验室使用。不适用于人类或动物的任何临床, 治疗或诊断用途。不适合动物或人类食用。



For full product information, images and publications, please visit our [website](#).

產品圖片



GTX113834 WB Image

SET antibody detects SET protein by Western blot analysis.

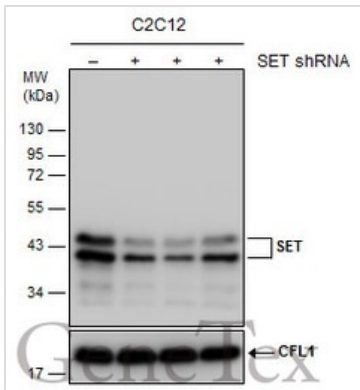
- A. 30 µg A431 whole cell lysate/extract
- B. 30 µg H1299 whole cell lysate/extract
- C. 30 µg HeLa whole cell lysate/extract
- D. 30 µg HepG2 whole cell lysate/extract
- E. 30 µg Molt-4 whole cell lysate/extract
- F. 30 µg Raji whole cell lysate/extract

12 % SDS-PAGE

SET antibody (GTX113834) dilution: 1:1000 SET antibody detects SET protein by Western blot analysis.

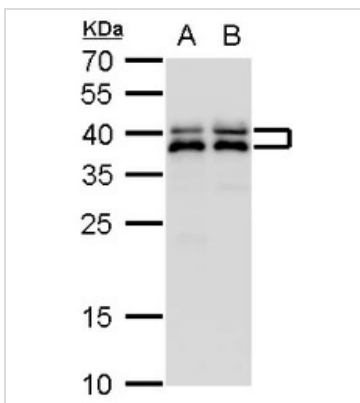
Observed SET protein is larger than the predicted M.W., possibly due to post-translational modifications.

Reference: [Exp Cell Res. 1998 May 1;240\(2\):274-81.](https://pubmed.ncbi.nlm.nih.gov/9511111/)



GTX113834 WB Image

Non-transfected (-) and transfected (+) C2C12 whole cell extracts (30 µg) were separated by 12% SDS-PAGE, and the membrane was blotted with SET antibody (GTX113834) diluted at 1:1000.



GTX113834 WB Image

SET antibody detects SET protein by western blot analysis.

- A. 30 µg PC-12 whole cell lysate/extract
- B. 30 µg Rat2 whole cell lysate/extract

12 % SDS-PAGE

SET antibody (GTX113834) dilution: 1:1000



For full product information, images and publications, please visit our [website](http://www.genetex.com).