

HCLS1 antibody [N1N3]

Cat. No. GTX114467

宿主	Rabbit
克隆	Polyclonal
同种型	IgG
实验应用	WB, IP
种属反应	Human

实验应用

应用说明

*最佳稀释倍数与浓度应由研究人员确认

Suggested dilution	Recommended dilution
WB	1:500-1:3000
IP	1:100-1:500

以下为常规应用缩写的中文注解

WB: 免疫印迹

ICC/IF: 细胞染色

IHC-P: 石蜡切片

IHC-Fr: 冰冻切片

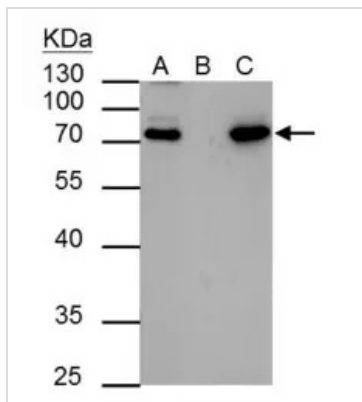
属性

形式	Liquid
存储溶液	0.1M Tris, 0.1M Glycine, 20% Glycerol
保存剂	0.01% Thimerosal
存放说明	Store as concentrated solution. Centrifuge briefly prior to opening vial. For short-term storage (1-2 weeks), store at 4°C. For long-term storage, aliquot and store at -20°C or below. Avoid multiple freeze-thaw cycles.
浓度	0.95 mg/ml (Please refer to the vial label for the specific concentration.)
偶联	Unconjugated
RRID	AB_10619113
注意事项	仅供实验室使用。不适用于人类或动物的任何临床, 治疗或诊断用途。不适合动物或人类食用。

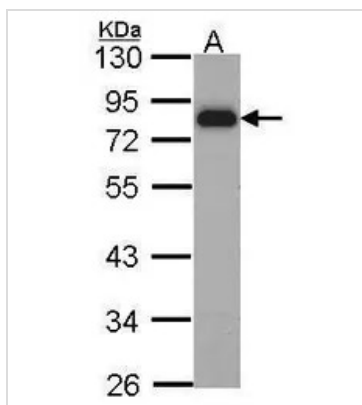


For full product information, images and publications, please visit our [website](#).

產品圖片

**GTX114467 IP Image**

HCLS1 antibody immunoprecipitates HCLS1 protein in IP experiments. IP Sample: 293T whole cell lysate/extract A : 30 μ g whole cell lysate/extract of HCLS1 protein expressing 293T cells B : Control with 2.5 μ g of pre-immune rabbit IgG C : Immunoprecipitation of HCLS1 by 2.5 μ g of HCLS1 antibody (GTX114467)
10% SDS-PAGE The immunoprecipitated HCLS1 protein was detected by HCLS1 antibody (GTX114467) diluted at 1 : 1000. EasyBlot anti-rabbit IgG (HRP) (GTX221666-01) was used as a secondary reagent.

**GTX114467 WB Image**

Sample (30 ug of whole cell lysate)
A: Raji
10% SDS PAGE
HCLS1 antibody
GTX114467 diluted at 1:1000



For full product information, images and publications, please visit our [website](#).