

## PPP2R3A antibody [C2C3], C-term

**Cat. No. GTX114655**

宿主	Rabbit
克隆	Polyclonal
同种型	IgG
实验应用	WB, ICC/IF, IHC-P
种属反应	Human, Mouse, Rat

## 实验应用

## 应用说明

\*最佳稀释倍数与浓度应由研究人员确认

Suggested dilution	Recommended dilution
WB	1:500-1:3000
ICC/IF	1:100-1:1000
IHC-P	1:100-1:1000

以下为常规应用缩写的中文注解

WB: 免疫印迹

ICC/IF: 细胞染色

IHC-P: 石蜡切片

IHC-Fr: 冰冻切片

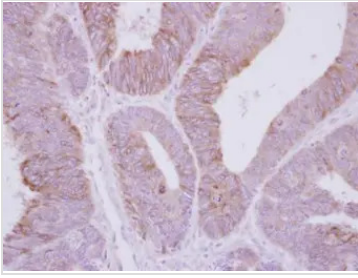
## 属性

形式	Liquid
存储溶液	PBS, 1% BSA, 20% Glycerol
保存剂	0.01% Thimerosal
存放说明	Store as concentrated solution. Centrifuge briefly prior to opening vial. For short-term storage (1-2 weeks), store at 4°C. For long-term storage, aliquot and store at -20°C or below. Avoid multiple freeze-thaw cycles.
浓度	1 mg/ml (Please refer to the vial label for the specific concentration.)
偶联	Unconjugated
RRID	AB_11164754
注意事项	仅供实验室使用。不适用于人类或动物的任何临床, 治疗或诊断用途。不适合动物或人类食用。



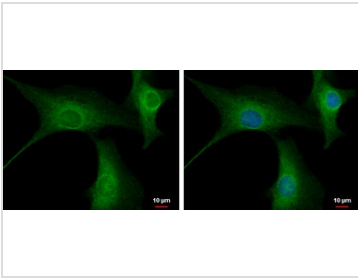
For full product information, images and publications, please visit our [website](#).

## 產品圖片

**GTX114655 IHC-P Image**

Immunohistochemical analysis of paraffin-embedded human colon carcinoma, using PPP2R3A(GTX114655) antibody at 1:250 dilution.

Antigen Retrieval: Trilogy™ (EDTA based, pH 8.0) buffer, 15min

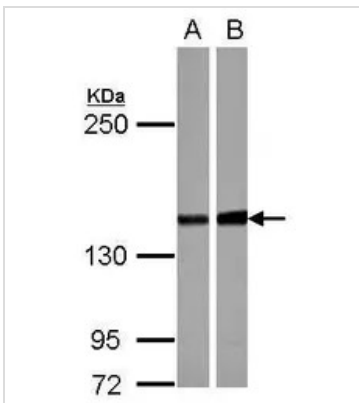
**GTX114655 ICC/IF Image**

PPP2R3A antibody [C2C3], C-term detects PPP2R3A protein at cytoplasm by immunofluorescent analysis.

Sample: U87-MG cells were fixed in 4% paraformaldehyde at RT for 15 min.

Green: PPP2R3A protein stained by PPP2R3A antibody [C2C3], C-term (GTX114655) diluted at 1:500.

Blue: Hoechst 33342 staining.

**GTX114655 WB Image**

Sample (30 µg of whole cell lysate)

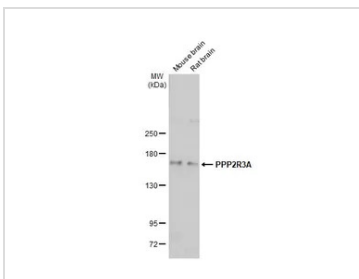
A: NT2D1

B: U87-MG

5% SDS PAGE

GTX114655 diluted at 1:1000

The HRP-conjugated anti-rabbit IgG antibody (GTX213110-01) was used to detect the primary antibody.

**GTX114655 WB Image**

Various tissue extracts (50 µg) were separated by 5% SDS-PAGE, and the membrane was blotted with PPP2R3A antibody [C2C3], C-term (GTX114655) diluted at 1:1000. The HRP-conjugated anti-rabbit IgG antibody (GTX213110-01) was used to detect the primary antibody, and the signal was developed with Trident ECL plus-Enhanced.



For full product information, images and publications, please visit our [website](#).