

VDP / p115 antibody

Cat. No. GTX115115

宿主	Rabbit
克隆	Polyclonal
同种型	IgG
实验应用	WB, ICC/IF
种属反应	Human, Mouse

引用文献 (2)

实验应用

应用说明

*最佳稀释倍数与浓度应由研究人员确认

Suggested dilution	Recommended dilution
WB	1:500-1:3000
ICC/IF	1:100-1:1000

以下为常规应用缩写的中文注解

WB: 免疫印迹

ICC/IF: 细胞染色

IHC-P: 石蜡切片

IHC-Fr: 冰冻切片

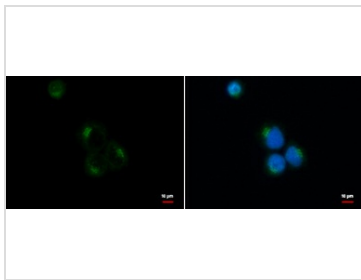
属性

形式	Liquid
存储溶液	PBS, 20% Glycerol
保存剂	0.01% Thimerosal
存放说明	Store as concentrated solution. Centrifuge briefly prior to opening vial. For short-term storage (1-2 weeks), store at 4°C. For long-term storage, aliquot and store at -20°C or below. Avoid multiple freeze-thaw cycles.
浓度	1 mg/ml (Please refer to the vial label for the specific concentration.)
偶联	Unconjugated
RRID	AB_2885354
注意事项	仅供实验室使用。不适用于人类或动物的任何临床, 治疗或诊断用途。不适合动物或人类食用。



For full product information, images and publications, please visit our [website](#).

產品圖片

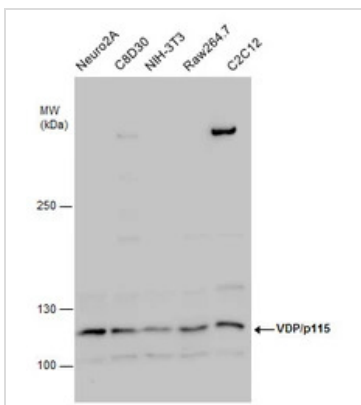
**GTX115115 ICC/IF Image**

USO1 antibody detects USO1 protein at Golgi apparatus by immunofluorescent analysis.

Sample: A431 cells were fixed in 100% MeOH for 5 min.

Green: USO1 protein stained by USO1 antibody (GTX115115) diluted at 1:500.

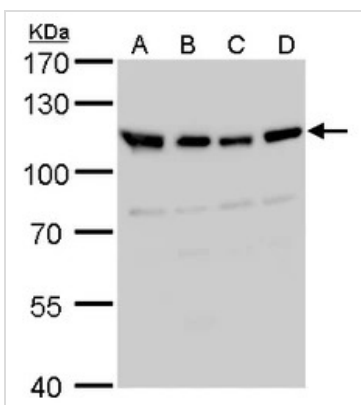
Blue: Hoechst 33342 staining.

**GTX115115 WB Image**

VDP/p115 antibody detects VDP/p115 protein by western blot analysis. Various whole cell extracts (30 μ g)

were separated by 5% SDS-PAGE, and the membrane was blotted with VDP/p115 antibody (GTX115115)

diluted by 1:1000.

**GTX115115 WB Image**

VDP/p115 antibody detects VDP/p115 protein by Western blot analysis.

A. 30 μ g 293T

B. 30 μ g A431

C. 30 μ g HeLa

D. 30 μ g HepG2

7.5 % SDS-PAGE

VDP/p115 antibody (GTX115115) dilution: 1:1000



For full product information, images and publications, please visit our [website](#).