

## TOX antibody [N1C1]

**Cat. No. GTX115287**

宿主	Rabbit
克隆	Polyclonal
同种型	IgG
实验应用	WB, IHC-P
种属反应	Human, Mouse, Rat

## 实验应用

## 应用说明

\*最佳稀释倍数与浓度应由研究人员确认

Suggested dilution	Recommended dilution
WB	1:500-1:3000
IHC-P	1:100-1:1000

以下为常规应用缩写的中文注解

WB: 免疫印迹

ICC/IF: 细胞染色

IHC-P: 石蜡切片

IHC-Fr: 冰冻切片

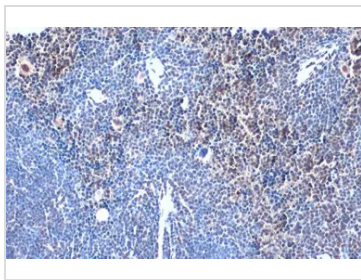
## 属性

形式	Liquid
存储溶液	PBS, 1% BSA, 20% Glycerol
保存剂	0.025% ProClin 300
存放说明	Store as concentrated solution. Centrifuge briefly prior to opening vial. For short-term storage (1-2 weeks), store at 4°C. For long-term storage, aliquot and store at -20°C or below. Avoid multiple freeze-thaw cycles.
浓度	0.4 mg/ml (Please refer to the vial label for the specific concentration.)
偶联	Unconjugated
RRID	AB_11170624
注意事项	仅供实验室使用。不适用于人类或动物的任何临床, 治疗或诊断用途。不适合动物或人类食用。



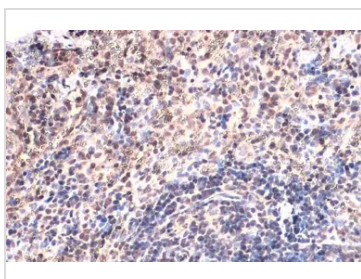
For full product information, images and publications, please visit our [website](#).

產品圖片



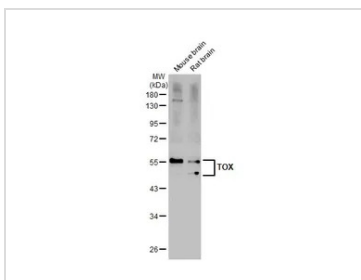
**GTX115287 IHC-P Image**

TOX antibody [N1C1] detects TOX protein at nucleus by immunohistochemical analysis.  
 Sample: Paraffin-embedded mouse lymph node.  
 TOX stained by TOX antibody [N1C1] (GTX115287) diluted at 1:500.  
 Antigen Retrieval: Citrate buffer, pH 6.0, 15 min



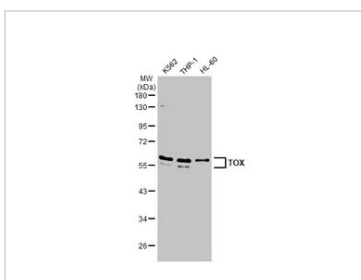
**GTX115287 IHC-P Image**

TOX antibody [N1C1] detects TOX protein at nucleus by immunohistochemical analysis.  
 Sample: Paraffin-embedded mouse spleen.  
 TOX stained by TOX antibody [N1C1] (GTX115287) diluted at 1:500.  
 Antigen Retrieval: Citrate buffer, pH 6.0, 15 min



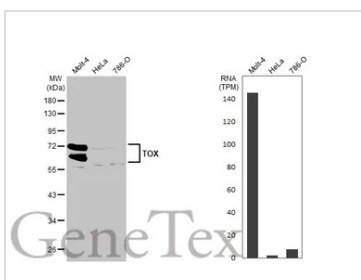
**GTX115287 WB Image**

Various tissue extracts (50 µg) were separated by 10% SDS-PAGE, and the membrane was blotted with TOX antibody [N1C1] (GTX115287) diluted at 1:1000. The HRP-conjugated anti-rabbit IgG antibody (GTX213110-01) was used to detect the primary antibody.



**GTX115287 WB Image**

Various whole cell extracts (30 µg) were separated by 10% SDS-PAGE, and the membrane was blotted with TOX antibody [N1C1] (GTX115287) diluted at 1:1000. The HRP-conjugated anti-rabbit IgG antibody (GTX213110-01) was used to detect the primary antibody.



**GTX115287 WB Image**

Various whole cell extracts (30 µg) were separated by 10% SDS-PAGE, and the membrane was blotted with TOX antibody [N1C1] (GTX115287) diluted at 1:1000. The HRP-conjugated anti-rabbit IgG antibody (GTX213110-01) was used to detect the primary antibody. Corresponding RNA expression data for the same cell lines are based on Human Protein Atlas program.



For full product information, images and publications, please visit our [website](#).