

## RAD51AP1 antibody [N1C1]

Cat. No. GTX115455

|      |            |
|------|------------|
| 宿主   | Rabbit     |
| 克隆   | Polyclonal |
| 同种型  | IgG        |
| 实验应用 | WB         |
| 种属反应 | Human      |

引用文献 (2)

## 实验应用

## 应用说明

\*最佳稀释倍数与浓度应由研究人员确认

| Suggested dilution | Recommended dilution |
|--------------------|----------------------|
|--------------------|----------------------|

|    |              |
|----|--------------|
| WB | 1:500-1:3000 |
|----|--------------|

以下为常规应用缩写的中文注解

WB: 免疫印迹

ICC/IF: 细胞染色

IHC-P: 石蜡切片

IHC-Fr: 冰冻切片

## 属性

|    |        |
|----|--------|
| 形式 | Liquid |
|----|--------|

|      |                                       |
|------|---------------------------------------|
| 存储溶液 | 0.1M Tris, 0.1M Glycine, 20% Glycerol |
|------|---------------------------------------|

|     |                  |
|-----|------------------|
| 保存剂 | 0.01% Thimerosal |
|-----|------------------|

|      |  |
|------|--|
| 存放说明 | Store as concentrated solution. Centrifuge briefly prior to opening vial. For short-term storage (1-2 weeks), store at 4°C. For long-term storage, aliquot and store at -20°C or below. Avoid multiple freeze-thaw cycles. |
|------|--|

|    |   |
|----|---|
| 浓度 | 0.61 mg/ml (Please refer to the vial label for the specific concentration.) |
|----|---|

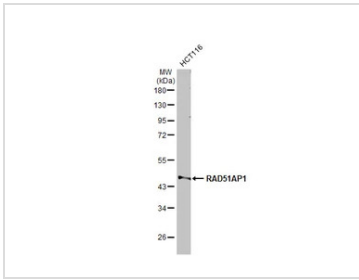
|    |              |
|----|--------------|
| 偶联 | Unconjugated |
|----|--------------|

|      |             |
|------|-------------|
| RRID | AB_10729638 |
|------|-------------|

|      |  |
|------|--|
| 注意事项 | 仅供实验室使用。不适用于人类或动物的任何临床，治疗或诊断用途。不适合动物或人类食用。 |
|------|--|

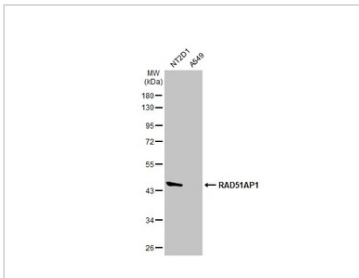
For full product information, images and publications, please visit our [website](#).

產品圖片



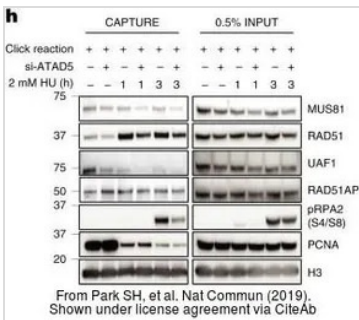
**GTX115455 WB Image**

Whole cell extract (30 µg) was separated by 10% SDS-PAGE, and the membrane was blotted with RAD51AP1 antibody [N1C1] (GTX115455) diluted at 1:1000. The HRP-conjugated anti-rabbit IgG antibody (GTX213110-01) was used to detect the primary antibody, and the signal was developed with Trident ECL plus-Enhanced.



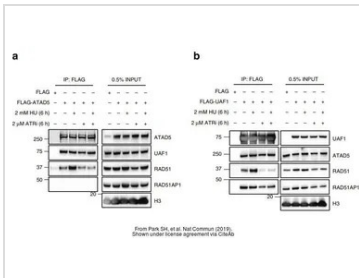
**GTX115455 WB Image**

Various whole cell extracts (30 µg) were separated by 10% SDS-PAGE, and the membrane was blotted with RAD51AP1 antibody [N1C1] (GTX115455) diluted at 1:1000. The HRP-conjugated anti-rabbit IgG antibody (GTX213110-01) was used to detect the primary antibody.



**GTX115455 WB Image**

The data was published in the journal Nat Commun in 2019. [PMID: 31844045](https://pubmed.ncbi.nlm.nih.gov/31844045/)



**GTX115455 WB Image**

The data was published in the journal Nat Commun in 2019. [PMID: 31844045](https://pubmed.ncbi.nlm.nih.gov/31844045/)



For full product information, images and publications, please visit our [website](https://www.genetex.com).