

## TRIM29 antibody [C1C3]

Cat. No. GTX115749

宿主	Rabbit
克隆	Polyclonal
同种型	IgG
实验应用	WB, IHC-P, IP
种属反应	Human, Mouse

引用文献 (3)

## 实验应用

## 应用说明

\*最佳稀释倍数与浓度应由研究人员确认

Suggested dilution	Recommended dilution
WB	1:500-1:3000
IHC-P	1:100-1:1000
IP	1:100-1:500

以下为常规应用缩写的中文注解

WB: 免疫印迹

ICC/IF: 细胞染色

IHC-P: 石蜡切片

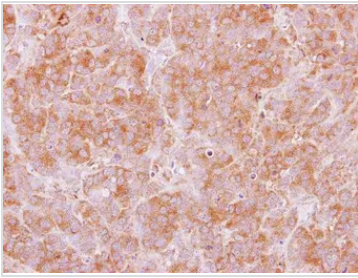
IHC-Fr: 冰冻切片

## 属性

形式	Liquid
存储溶液	0.1M Tris, 0.1M Glycine, 20% Glycerol
保存剂	0.01% Thimerosal
存放说明	Store as concentrated solution. Centrifuge briefly prior to opening vial. For short-term storage (1-2 weeks), store at 4°C. For long-term storage, aliquot and store at -20°C or below. Avoid multiple freeze-thaw cycles.
浓度	0.99 mg/ml (Please refer to the vial label for the specific concentration.)
偶联	Unconjugated
RRID	AB_10632868
注意事项	仅供实验室使用。不适用于人类或动物的任何临床, 治疗或诊断用途。不适合动物或人类食用。

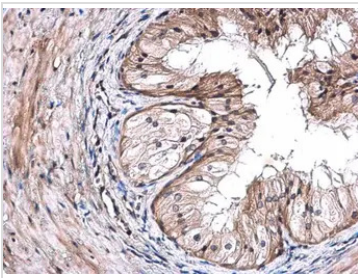
For full product information, images and publications, please visit our [website](#).

## 產品圖片

**GTX115749 IHC-P Image**

Immunohistochemical analysis of paraffin-embedded MCF7 xenograft, using TRIM29(GTX115749) antibody at 1:100 dilution.

Antigen Retrieval: Citrate buffer, pH 6.0, 15 min

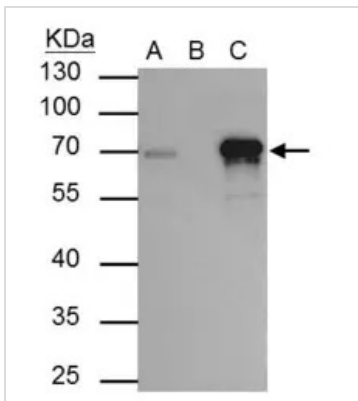
**GTX115749 IHC-P Image**

TRIM29 antibody [C1C3] detects TRIM29 protein at cytoplasm in mouse prostate by immunohistochemical analysis.

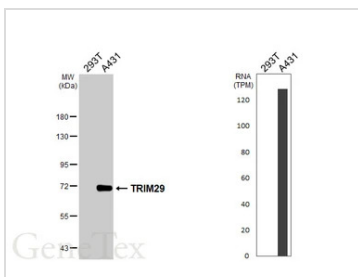
Sample: Paraffin-embedded mouse prostate.

TRIM29 antibody [C1C3] (GTX115749) diluted at 1:500.

Antigen Retrieval: Citrate buffer, pH 6.0, 15 min

**GTX115749 IP Image**

TRIM29 antibody immunoprecipitates TRIM29 protein in IP experiments. IP Sample: A431 whole cell lysate/extract A : 30 µg whole cell lysate/extract of TRIM29 protein expressing A431 cells B : Control with 2.5 µg of pre-immune rabbit IgG C : Immunoprecipitation of TRIM29 by 2.5 µg of TRIM29 antibody (GTX115749) 10% SDS-PAGE The immunoprecipitated TRIM29 protein was detected by TRIM29 antibody (GTX115749) diluted at 1:2000. EasyBlot anti-rabbit IgG (HRP) (GTX221666-01) was used as a secondary reagent.

**GTX115749 WB Image**

Various whole cell extracts (30 µg) were separated by 7.5% SDS-PAGE, and the membrane was blotted with TRIM29 antibody [C1C3] (GTX115749) diluted at 1:1000. The HRP-conjugated anti-rabbit IgG antibody (GTX213110-01) was used to detect the primary antibody. Corresponding RNA expression data are based on Human Protein Atlas program.



For full product information, images and publications, please visit our [website](#).