

Progesterone Receptor antibody [N1], N-term

Cat. No. GTX116051

宿主	Rabbit
克隆	Polyclonal
同种型	IgG
实验应用	ICC/IF, IHC-P
种属反应	Human

引用文献 (1)

产品说明

摘要

The progesterone receptor (PR) is a well-known estrogen receptor (ER) target gene that is expressed in over two-thirds of ER-positive breast cancers. PR protein has a predicted molecular weight of 99kDa. It acts as a transcriptional regulator and activator of signal transduction pathways (i.e., MAPK, PI3K/Akt, and c-Src) that can drive proliferative signaling in breast cancer cells.

实验应用

应用说明

*最佳稀释倍数与浓度应由研究人员确认

Suggested dilution	Recommended dilution
ICC/IF	1:100-1:1000
IHC-P	1:100-1:1000

以下为常规应用缩写的中文注解

WB: 免疫印迹

ICC/IF: 细胞染色

IHC-P: 石蜡切片

IHC-Fr: 冰冻切片

属性

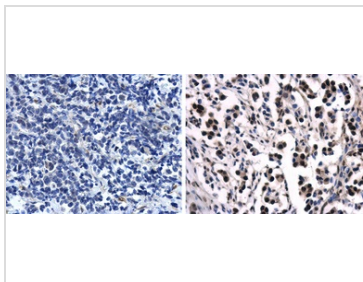
形式	Liquid
存储溶液	0.1M Tris, 0.1M Glycine, 10% Glycerol; 1% BSA
保存剂	0.01% Thimerosal
存放说明	Store as concentrated solution. Centrifuge briefly prior to opening vial. For short-term storage (1-2 weeks), store at 4°C. For long-term storage, aliquot and store at -20°C or below. Avoid multiple freeze-thaw cycles.
浓度	0.33 mg/ml (Please refer to the vial label for the specific concentration.)
偶联	Unconjugated
RRID	AB_2037757
注意事项	仅供实验室使用。不适用于人类或动物的任何临床、治疗或诊断用途。不适合动物或人类食用。



For full product information, images and publications, please visit our [website](#).

Date 2026 / 05 / 21 Page 1 of 2

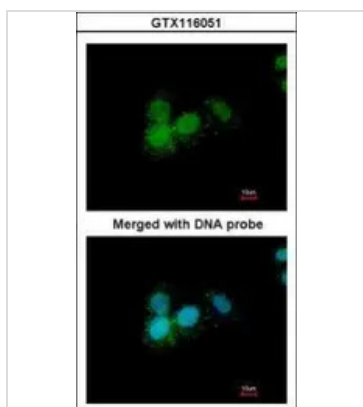
產品圖片

**GTX116051 IHC-P Image**

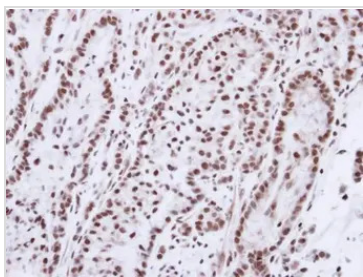
Immunohistochemical analysis of paraffin-embedded human breast cancer using Progesterone Receptor antibody (GTX116051) diluted at 1:500.

Representative data showing negative staining in PR-negative breast cancer (left) and nuclear staining in PR-positive breast cancer (right).

Antigen Retrieval: Citrate buffer, pH 6.0, 15 min

**GTX116051 ICC/IF Image**

Immunofluorescence analysis of paraformaldehyde-fixed A549, using Progesterone receptor(GTX116051) antibody at 1:200 dilution.

**GTX116051 IHC-P Image**

Immunohistochemical analysis of paraffin-embedded A549 xenograft, using Progesterone receptor(GTX116051) antibody at 1:100 dilution.

Antigen Retrieval: Trilogy™ (EDTA based, pH 8.0) buffer, 15min



For full product information, images and publications, please visit our [website](#).