

## FBLIM1 antibody [N3C3]

Cat. No. GTX116584

宿主	Rabbit
克隆	Polyclonal
同种型	IgG
实验应用	WB, IHC-P
种属反应	Human

引用文献 (1)

## 实验应用

## 应用说明

\*最佳稀释倍数与浓度应由研究人员确认

Suggested dilution	Recommended dilution
WB	1:500-1:3000
IHC-P	1:100-1:1000

以下为常规应用缩写的中文注解

WB: 免疫印迹

ICC/IF: 细胞染色

IHC-P: 石蜡切片

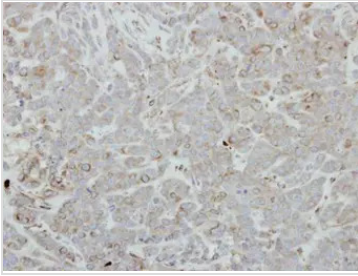
IHC-Fr: 冰冻切片

## 属性

形式	Liquid
存储溶液	0.1M Tris, 0.1M Glycine, 20% Glycerol
保存剂	0.01% Thimerosal
存放说明	Store as concentrated solution. Centrifuge briefly prior to opening vial. For short-term storage (1-2 weeks), store at 4°C. For long-term storage, aliquot and store at -20°C or below. Avoid multiple freeze-thaw cycles.
浓度	0.8 mg/ml (Please refer to the vial label for the specific concentration.)
偶联	Unconjugated
RRID	AB_10632354
注意事项	仅供实验室使用。不适用于人类或动物的任何临床, 治疗或诊断用途。不适合动物或人类食用。

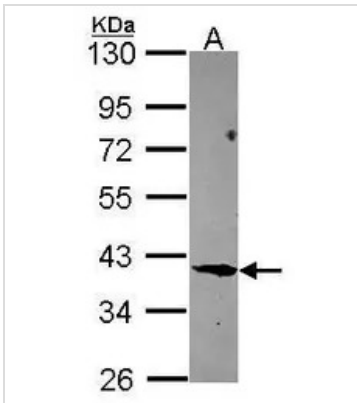
For full product information, images and publications, please visit our [website](#).

## 產品圖片

**GTX116584 IHC-P Image**

Immunohistochemical analysis of paraffin-embedded MDAMB231 xenograft, using FBLIM1(GTX116584) antibody at 1:250 dilution.

Antigen Retrieval: Citrate buffer, pH 6.0, 15 min

**GTX116584 WB Image**

Sample (30 ug of whole cell lysate)

A: HCT116

10% SDS PAGE

GTX116584 diluted at 1:1000



For full product information, images and publications, please visit our [website](#).