

## CUGBP2 antibody

Cat. No. GTX117035

宿主	Rabbit
克隆	Polyclonal
同种型	IgG
实验应用	WB, ICC/IF, IHC-P
种属反应	Human, Mouse

## 实验应用

## 应用说明

\*最佳稀释倍数与浓度应由研究人员确认

Suggested dilution	Recommended dilution
WB	1:500-1:3000
ICC/IF	1:100-1:1000
IHC-P	1:100-1:1000

以下为常规应用缩写的中文注解

WB: 免疫印迹

ICC/IF: 细胞染色

IHC-P: 石蜡切片

IHC-Fr: 冰冻切片

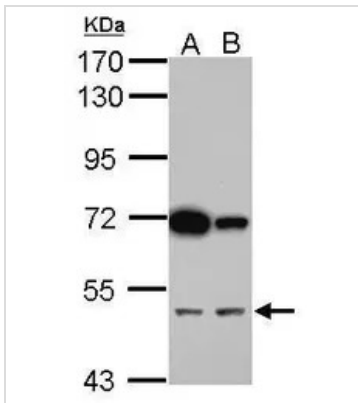
## 属性

形式	Liquid
存储溶液	PBS, 1% BSA, 20% Glycerol
保存剂	0.01% Thimerosal
存放说明	Store as concentrated solution. Centrifuge briefly prior to opening vial. For short-term storage (1-2 weeks), store at 4°C. For long-term storage, aliquot and store at -20°C or below. Avoid multiple freeze-thaw cycles.
浓度	1 mg/ml (Please refer to the vial label for the specific concentration.)
偶联	Unconjugated
RRID	AB_11171609
注意事项	仅供实验室使用。不适用于人类或动物的任何临床, 治疗或诊断用途。不适合动物或人类食用。



For full product information, images and publications, please visit our [website](#).

## 產品圖片

**GTX117035 WB Image**

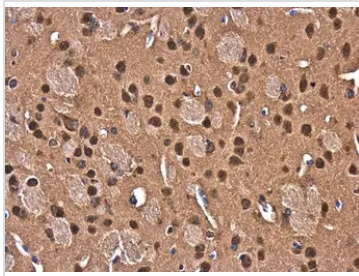
Sample (30 ug of whole cell lysate)

A: PC-3

B: U87-MG

7.5% SDS PAGE

GTX117035 diluted at 1:1000

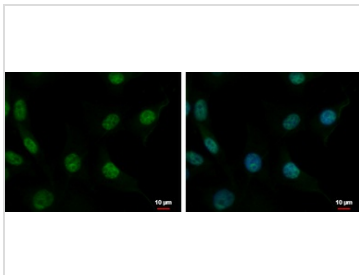
**GTX117035 IHC-P Image**

CUGBP2 antibody detects CUGBP2 protein at cytoplasm and nucleus in mouse brain by immunohistochemical analysis.

Sample: Paraffin-embedded mouse brain.

CUGBP2 antibody (GTX117035) diluted at 1:500.

Antigen Retrieval: Trilogy™ (EDTA based, pH 8.0) buffer, 15min

**GTX117035 ICC/IF Image**

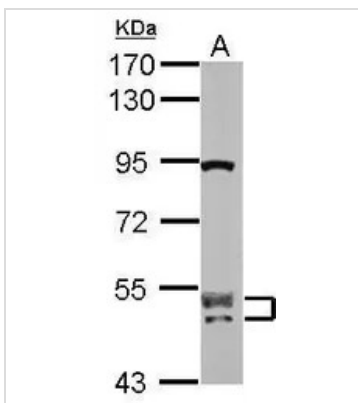
CUGBP2 antibody detects CUGBP2 protein at nucleus by immunofluorescent analysis.

Sample: U87-MG cells were fixed in 4% paraformaldehyde at RT for 15 min.

Green: CUGBP2 protein stained by CUGBP2 antibody (GTX117035) diluted at 1:500.

Blue: Hoechst 33342 staining.

Scale bar = 10 μm.

**GTX117035 WB Image**

Sample (50 ug of whole cell lysate)

A: mouse brain

7.5% SDS PAGE

GTX117035 diluted at 1:1000



For full product information, images and publications, please visit our [website](#).