

TMPRSS11D antibody

Cat. No. GTX117370

宿主	Rabbit
克隆	Polyclonal
同种型	IgG
实验应用	WB, ICC/IF, IHC-P
种属反应	Human

引用文献 (4)

实验应用

应用说明

*最佳稀释倍数与浓度应由研究人员确认

Suggested dilution	Recommended dilution
WB	1:500-1:3000
ICC/IF	1:100-1:1000
IHC-P	1:100-1:1000

以下为常规应用缩写的中文注解

WB: 免疫印迹

ICC/IF: 细胞染色

IHC-P: 石蜡切片

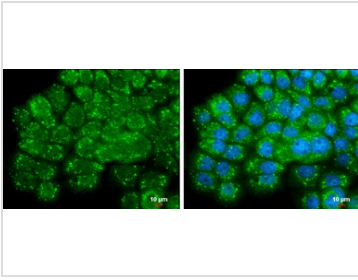
IHC-Fr: 冰冻切片

属性

形式	Liquid
存储溶液	0.1M Tris, 0.1M Glycine, 20% Glycerol
保存剂	0.01% Thimerosal
存放说明	Store as concentrated solution. Centrifuge briefly prior to opening vial. For short-term storage (1-2 weeks), store at 4°C. For long-term storage, aliquot and store at -20°C or below. Avoid multiple freeze-thaw cycles.
浓度	0.62 mg/ml (Please refer to the vial label for the specific concentration.)
偶联	Unconjugated
RRID	AB_11163589
注意事项	仅供实验室使用。不适用于人类或动物的任何临床, 治疗或诊断用途。不适合动物或人类食用。

For full product information, images and publications, please visit our [website](#).

產品图片

**GTX117370 ICC/IF Image**

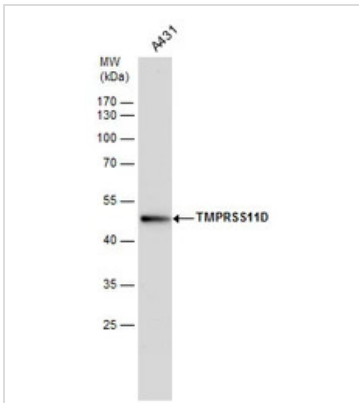
TMPRSS11D antibody detects secreted TMPRSS11D protein by immunofluorescent analysis.

Sample: A431 cells were fixed in 4% paraformaldehyde at RT for 15 min.

Green: TMPRSS11D protein stained by TMPRSS11D antibody (GTX117370) diluted at 1:500.

Blue: Hoechst 33342 staining.

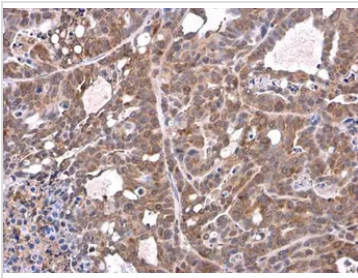
Scale bar = 10 µm.

**GTX117370 WB Image**

TMPRSS11D antibody detects TMPRSS11D protein by western blot analysis. Whole cell extracts (30 µg) was

separated by 10% SDS-PAGE, and the membrane was blotted with TMPRSS11D antibody (GTX117370)

diluted by 1:500.

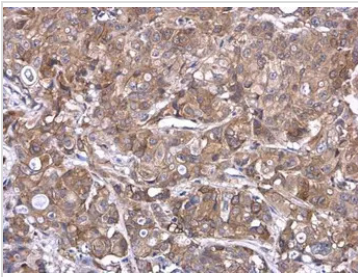
**GTX117370 IHC-P Image**

TMPRSS11D antibody detects TMPRSS11D protein at cytoplasm in NCI-H1299 xenograft by immunohistochemical analysis.

Sample: Paraffin-embedded NCI-H1299 xenograft.

TMPRSS11D antibody (GTX117370) diluted at 1:500.

Antigen Retrieval: Citrate buffer, pH 6.0, 15 min

**GTX117370 IHC-P Image**

TMPRSS11D antibody detects TMPRSS11D protein at cell membrane and cytoplasm in MCF7 xenograft by immunohistochemical analysis.

Sample: Paraffin-embedded MCF7 xenograft.

TMPRSS11D antibody (GTX117370) diluted at 1:500.

Antigen Retrieval: Citrate buffer, pH 6.0, 15 min



For full product information, images and publications, please visit our [website](#).