

AKT antibody [N3C2], Internal

Cat. No. GTX121937

宿主	Rabbit
克隆	Polyclonal
同种型	IgG
实验应用	WB, ICC/IF, IHC-P, IHC-Fr, IP
种属反应	Human, Mouse, Rat, Pig, Japanese Medaka

引用文献 (104)

★★★★★ 产品评论 (8)

产品说明

摘要

AKT antibody recognizes AKT, a serine/threonine-specific protein kinase with a predicted molecular weight of ~57 kDa. AKT is a family of three highly homologous isoforms that have more than a hundred substrates, with most of these regulated by all three proteins. Responding to many extracellular stimuli, AKT is active through major signaling nodes that include GSK3, FOXO, and TSC2/mTORC1.

实验应用

应用说明

*最佳稀释倍数与浓度应由研究人员确认

Suggested dilution	Recommended dilution
WB	1:500-1:3000
ICC/IF	1:100-1:1000
IHC-P	Assay dependent
IHC-Fr	Assay dependent
IP	1:100-1:500

以下为常规应用缩写的中文注解

WB: 免疫印迹

ICC/IF: 细胞染色

IHC-P: 石蜡切片

IHC-Fr: 冰冻切片

属性

形式	Liquid
存储溶液	PBS, 20% Glycerol
保存剂	0.025% ProClin 300
存放说明	Store as concentrated solution. Centrifuge briefly prior to opening vial. For short-term storage (1-2 weeks), store at 4°C. For long-term storage, aliquot and store at -20°C or below. Avoid multiple freeze-thaw cycles.
浓度	0.67 mg/ml (Please refer to the vial label for the specific concentration.)
偶联	Unconjugated



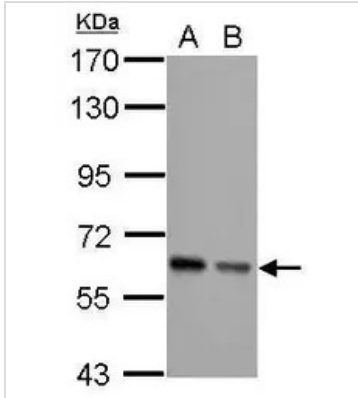
For full product information, images and publications, please visit our [website](#).

Date 2025 / 05 / 10 Page 1 of 2

RRID AB_10723121

注意事项 仅供实验室使用。不适用于人类或动物的任何临床，治疗或诊断用途。不适合动物或人类食用。

產品图片



GTK121937 WB Image

Sample (30 µg of whole cell lysate)

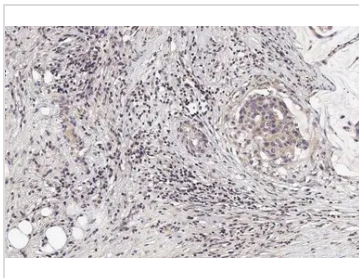
A: JC

B: BCL-1

7.5% SDS PAGE

GTK121937 diluted at 1:5000

The HRP-conjugated anti-rabbit IgG antibody (GTK213110-01) was used to detect the primary antibody.



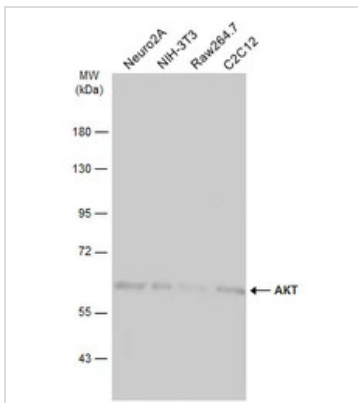
GTK121937 IHC-P Image

AKT antibody [N3C2], Internal detects AKT protein at cytoplasm and nucleus by immunohistochemical analysis.

Sample: Paraffin-embedded human breast carcinoma.

AKT stained by AKT antibody [N3C2], Internal (GTK121937) diluted at 1:500.

Antigen Retrieval: Citrate buffer, pH 6.0, 15 min



GTK121937 WB Image

Various whole cell extracts (30 µg) were separated by 7.5% SDS-PAGE, and the membrane was blotted with AKT antibody [N3C2], Internal (GTK121937) diluted at 1:1000. The HRP-conjugated anti-rabbit IgG antibody (GTK213110-01) was used to detect the primary antibody, and the signal was developed with Trident ECL plus-Enhanced.



For full product information, images and publications, please visit our [website](https://www.genetex.com).