

## Dengue virus NS2B protein antibody

Cat. No. GTX124246

宿主	Rabbit
克隆	Polyclonal
同种型	IgG
实验应用	WB, ICC/IF
种属反应	Dengue virus 2

引用文献 ( 30 )

★★★★★ 产品评论 ( 2 )

## 实验应用

## 应用说明

\*最佳稀释倍数与浓度应由研究人员确认

Suggested dilution	Recommended dilution
WB	1:1000-1:10000
ICC/IF	1:100-1:2000

以下为常规应用缩写的中文注解

WB: 免疫印迹

ICC/IF: 细胞染色

IHC-P: 石蜡切片

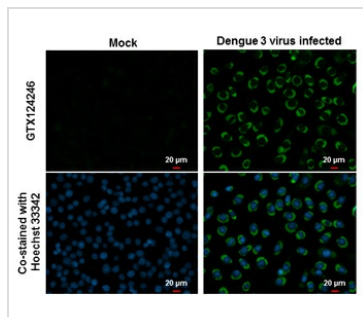
IHC-Fr: 冰冻切片

## 属性

形式	Liquid
存储溶液	PBS, 20% Glycerol
保存剂	0.025% ProClin 300
存放说明	Store as concentrated solution. Centrifuge briefly prior to opening vial. For short-term storage (1-2 weeks), store at 4°C. For long-term storage, aliquot and store at -20°C or below. Avoid multiple freeze-thaw cycles.
浓度	1.15 mg/ml (Please refer to the vial label for the specific concentration.)
偶联	Unconjugated
RRID	AB_11170698
注意事项	仅供实验室使用。不适用于人类或动物的任何临床, 治疗或诊断用途。不适合动物或人类食用。

For full product information, images and publications, please visit our [website](#).

## 產品圖片



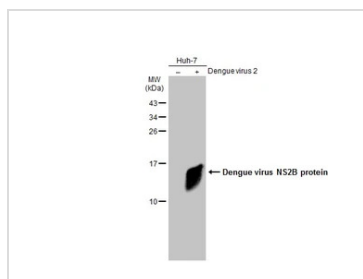
### GTx124246 ICC/IF Image

NS2B (Dengue virus) antibody detects NS2B (Dengue virus) protein at cytoplasm by immunofluorescent analysis.

Samples: BHK-21 cells mock (left) and infected with Dengue virus 3 (right) were fixed in MeOH.

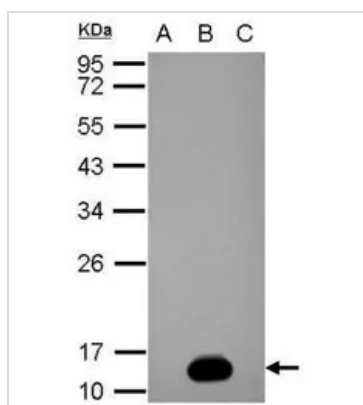
Green: NS2B (Dengue virus) protein stained by NS2B (Dengue virus) antibody (GTx124246) diluted at 1:2000.

Blue: Hoechst 33342 staining.



### GTx124246 WB Image

Non-infected (–) and infected (+) Huh-7 whole cell extracts (15 μg) were separated by 15% SDS-PAGE, and the membrane was blotted with Dengue virus NS2B protein antibody (GTx124246) diluted at 1:1000. The HRP-conjugated anti-rabbit IgG antibody (GTx213110-01) was used to detect the primary antibody.



### GTx124246 WB Image

Sample (20 μg of whole cell lysate)

A: BHK-21

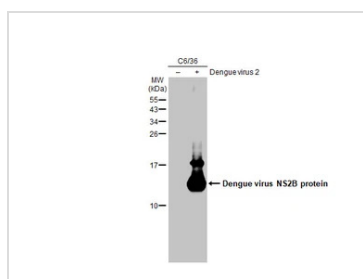
B: Dengue virus 2 infect BHK-21

C: Japanese encephalitis virus infect BHK-21

15% SDS PAGE

GTx124246 diluted at 1:5000

The HRP-conjugated anti-rabbit IgG antibody (GTx213110-01) was used to detect the primary antibody.



### GTx124246 WB Image

Non-infected (–) and infected (+) C6/36 whole cell extract (15 μg) were separated by 15% SDS-PAGE, and the membrane was blotted with Dengue virus NS2B protein antibody (GTx124246) diluted at 1:1000. The HRP-conjugated anti-rabbit IgG antibody (GTx213110-01) was used to detect the primary antibody.



For full product information, images and publications, please visit our [website](http://www.genetex.com).