

Cre recombinase antibody

Cat. No. GTX127271

宿主	Rabbit
克隆	Polyclonal
同种型	IgG
实验应用	WB, IP
种属反应	Species independent

实验应用

应用说明

*最佳稀释倍数与浓度应由研究人员确认

Suggested dilution	Recommended dilution
WB	1:5000-1:20000
IP	1:100-1:500

以下为常规应用缩写的中文注解

WB: 免疫印迹

ICC/IF: 细胞染色

IHC-P: 石蜡切片

IHC-Fr: 冰冻切片

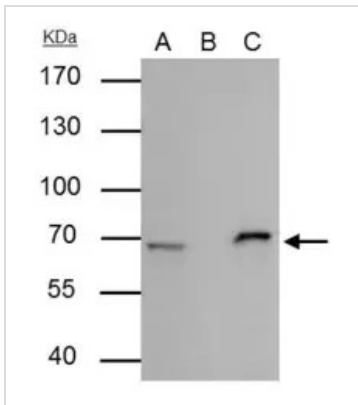
属性

形式	Liquid
存储溶液	PBS, 20% Glycerol
保存剂	0.01% Thimerosal
存放说明	Store as concentrated solution. Centrifuge briefly prior to opening vial. For short-term storage (1-2 weeks), store at 4°C. For long-term storage, aliquot and store at -20°C or below. Avoid multiple freeze-thaw cycles.
浓度	1 mg/ml (Please refer to the vial label for the specific concentration.)
偶联	Unconjugated
RRID	AB_11167206
注意事项	仅供实验室使用。不适用于人类或动物的任何临床, 治疗或诊断用途。不适合动物或人类食用。

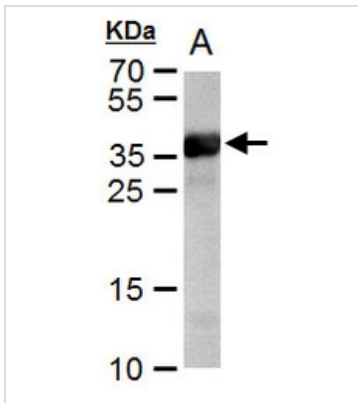


For full product information, images and publications, please visit our [website](#).

產品圖片

**GTX127271 IP Image**

Cre recombinase antibody immunoprecipitates Cre recombinase protein in IP experiments. IP Sample: 293T whole cell lysate/extract A : 20 μ g whole cell lysate/extract of Cre recombinase protein expressing 293T cells B : Control with 2.5 μ g of pre-immune rabbit IgG C : Immunoprecipitation of Cre recombinase protein by 2.6 μ g of Cre recombinase antibody (GTX127271) 7.5% SDS-PAGE The immunoprecipitated Cre recombinase protein was detected by Cre recombinase antibody (GTX127271) diluted at 1 : 5000. EasyBlot anti-mouse IgG (HRP) (GTX221666-01) was used as a secondary reagent.

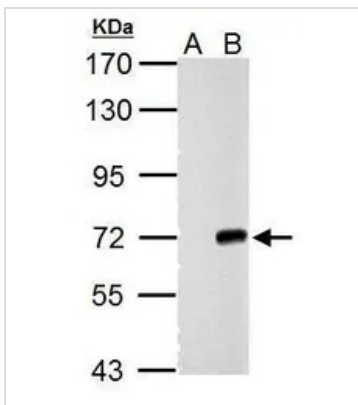
**GTX127271 WB Image**

Cre recombinase antibody detects Cre recombinase protein by western blot analysis.

A. IPTG-induced cell lysate from E. coli expressing Cre recombinant proteins
12.5% SDS-PAGE

Cre recombinase antibody (GTX127271) dilution: 1:10000

The HRP-conjugated anti-rabbit IgG antibody (GTX213110-01) was used to detect the primary antibody.

**GTX127271 WB Image**

Cre recombinase antibody detects Cre recombinase protein by western blot analysis.

A. 30 μ g 293T whole cell lysate/extract

B. 30 μ g whole cell lysate/extract of Cre-ERT2-transfected 293T cells (Cre-ERT2 fusion protein size: 72kDa)
7.5% SDS-PAGE

Cre recombinase antibody (GTX127271) dilution: 1:10000

The HRP-conjugated anti-rabbit IgG antibody (GTX213110-01) was used to detect the primary antibody.



For full product information, images and publications, please visit our [website](#).