

HIF1 alpha antibody

Cat. No. GTX127309

宿主	Rabbit
克隆	Polyclonal
同种型	IgG
实验应用	WB, ICC/IF, IHC-P, IHC-Fr, IP, ChIP assay
种属反应	Human, Mouse, Rat, Rabbit, Bovine

引用文献 (219)

★★★★★ 产品评论 (26)

产品说明

摘要

HIF1 alpha antibody recognizes HIF1 alpha (HIF1a) protein, which is a subunit of the heterodimeric transcription factor hypoxia-inducible factor-1 (HIF-1). HIF-1 is a master regulator of homeostatic adaption to hypoxia (low oxygen supply) in various physiological and pathological conditions including normal development and cancer.

实验应用

应用说明

*最佳稀释倍数与浓度应由研究人员确认

Suggested dilution	Recommended dilution
WB	1:500-1:3000
ICC/IF	1:100-1:1000
IHC-P	1:100-1:1000
IHC-Fr	Assay dependent
IP	1:100-1:570
ChIP assay	Assay dependent

以下为常规应用缩写的中文注解

WB: 免疫印迹

ICC/IF: 细胞染色

IHC-P: 石蜡切片

IHC-Fr: 冰冻切片

属性

形式	Liquid
存储溶液	PBS, 1% BSA, 20% Glycerol
保存剂	0.025% ProClin 300
存放说明	Store as concentrated solution. Centrifuge briefly prior to opening vial. For short-term storage (1-2 weeks), store at 4°C. For long-term storage, aliquot and store at -20°C or below. Avoid multiple freeze-thaw cycles.
浓度	0.31 mg/ml (Please refer to the vial label for the specific concentration.)
偶联	Unconjugated



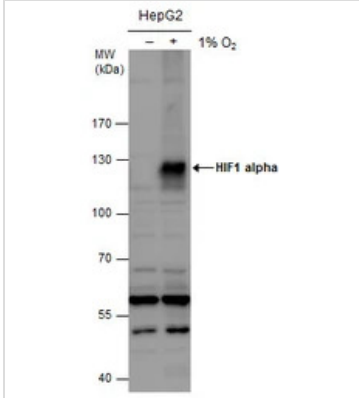
For full product information, images and publications, please visit our [website](#).

Date 2026 / 04 / 08 Page 1 of 2

RRID AB_2616089

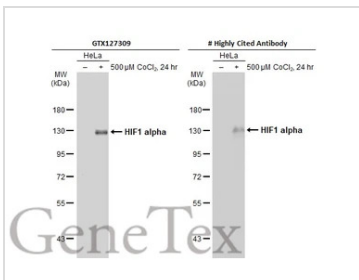
注意事项 仅供实验室使用。不适用于人类或动物的任何临床，治疗或诊断用途。不适合动物或人类食用。

產品图片



GTX127309 WB Image

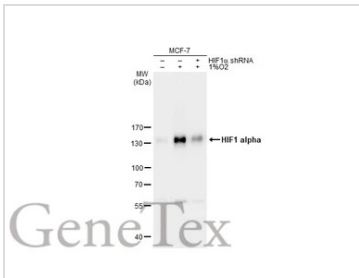
HIF1 alpha antibody detects HIF1 alpha protein by western blot analysis. Un-treated (-) and treated (+, 1% O₂ treatment for 24hr) HepG2 whole cell extracts (30 µg) were separated by 7.5% SDS-PAGE, and the membrane was blotted with HIF1 alpha antibody (GTX127309) diluted at 1:1000. The HRP-conjugated anti-rabbit IgG antibody (GTX213110-01) was used to detect the primary antibody.



GTX127309 WB Image

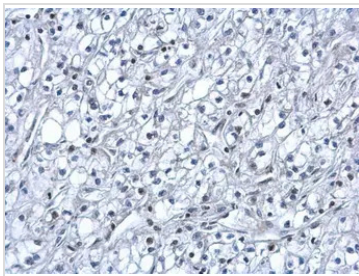
Untreated (-) and treated (+) HeLa whole cell extracts (30 µg) were separated by 7.5% SDS-PAGE, and the membrane was blotted with HIF1 alpha antibody (GTX127309) diluted at 1:1000. The HRP-conjugated anti-rabbit IgG antibody (GTX213110-01) was used to detect the primary antibody.

*The competitor is not affiliated with GeneTex and does not endorse this product.



GTX127309 WB Image

Untreated (-) and treated (+) MCF-7 whole cell extracts (30 µg) were separated by 7.5% SDS-PAGE, and the membrane was blotted with HIF1 alpha antibody (GTX127309) diluted at 1:1000. The HRP-conjugated anti-rabbit IgG antibody (GTX213110-01) was used to detect the primary antibody.



GTX127309 IHC-P Image

HIF1 alpha antibody detects HIF1 alpha protein at nucleus on human kidney cancer by immunohistochemical analysis.

Sample: Paraffin-embedded human kidney cancer.

HIF1 alpha antibody (GTX127309) dilution: 1:500.



For full product information, images and publications, please visit our [website](#).