

NFAT1 antibody

Cat. No. GTX127932

宿主	Rabbit
克隆	Polyclonal
同种型	IgG
实验应用	WB, ICC/IF, IP
种属反应	Human, Mouse

引用文献 (3)

实验应用

应用说明

*最佳稀释倍数与浓度应由研究人员确认

Suggested dilution	Recommended dilution
WB	1:500-1:3000
ICC/IF	1:100-1:1000
IP	1:100-1:500

以下为常规应用缩写的中文注解

WB: 免疫印迹

ICC/IF: 细胞染色

IHC-P: 石蜡切片

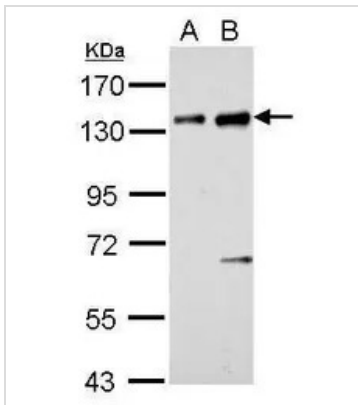
IHC-Fr: 冰冻切片

属性

形式	Liquid
存储溶液	PBS, 20% Glycerol
保存剂	0.01% Thimerosal
存放说明	Store as concentrated solution. Centrifuge briefly prior to opening vial. For short-term storage (1-2 weeks), store at 4°C. For long-term storage, aliquot and store at -20°C or below. Avoid multiple freeze-thaw cycles.
浓度	1 mg/ml (Please refer to the vial label for the specific concentration.)
偶联	Unconjugated
RRID	AB_2885655
注意事项	仅供实验室使用。不适用于人类或动物的任何临床, 治疗或诊断用途。不适合动物或人类食用。

For full product information, images and publications, please visit our [website](#).

產品圖片

**GTx127932 WB Image**

NFAT1 antibody detects NFATC2 protein by western blot analysis.

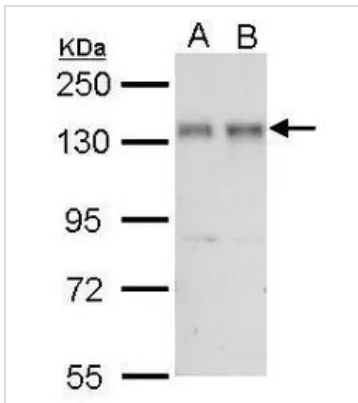
A. 30 μ g BCL-1 whole cell lysate/extract

B. 30 μ g Raw264.7 whole cell lysate/extract

7.5% SDS-PAGE

NFAT1 antibody (GTx127932) dilution: 1:1000

The HRP-conjugated anti-rabbit IgG antibody (GTx213110-01) was used to detect the primary antibody.

**GTx127932 WB Image**

NFAT1 antibody detects NFATC2 protein by western blot analysis.

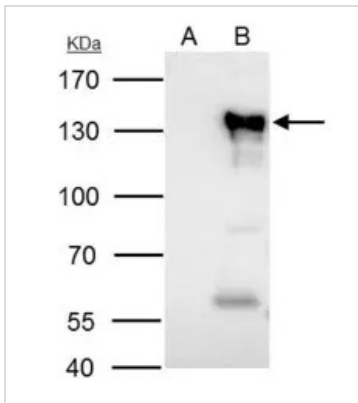
A. 30 μ g Jurkat whole cell lysate/extract

B. 30 μ g Raji whole cell lysate/extract

7.5% SDS-PAGE

NFAT1 antibody (GTx127932) dilution: 1:1000

The HRP-conjugated anti-rabbit IgG antibody (GTx213110-01) was used to detect the primary antibody.

**GTx127932 IP Image**

NFAT1 antibody immunoprecipitates NFAT1 protein in IP experiments.

IP samples: Raji whole cell extract

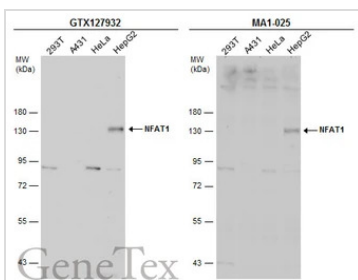
A. Control with 4 μ g of preimmune Rabbit IgG

B. Immunoprecipitation of NFAT1 protein by 4 μ g NFAT1 antibody (GTx127932)

7.5 % SDS-PAGE

The immunoprecipitated NFAT1 protein was detected by NFAT1 antibody (GTx127932) diluted at 1:500.

[EasyBlot anti-rabbit IgG (GTx221666-01) was used as a secondary reagent]

**GTx127932 WB Image**

Various whole cell extracts (30 μ g) were separated by 7.5% SDS-PAGE, and the membranes were blotted with NFAT1 antibody (GTx127932) diluted at 1:500 and competitor's antibody (MA1-025) diluted at 1:500.

The HRP-conjugated anti-rabbit IgG antibody (GTx213110-01) was used to detect the primary antibody.

*The competitor is not affiliated with GeneTex and does not endorse this product.



For full product information, images and publications, please visit our [website](#).