

## Dengue virus prM protein antibody

Cat. No. GTX128092

宿主	Rabbit
克隆	Polyclonal
同种型	IgG
实验应用	WB, ICC/IF
种属反应	Dengue virus 2

引用文献 ( 14 )

★★★★☆ 产品评论 ( 2 )

## 实验应用

## 应用说明

\*最佳稀释倍数与浓度应由研究人员确认

Suggested dilution	Recommended dilution
WB	1:500-1:20000
ICC/IF	1:100-1:2000

以下为常规应用缩写的中文注解

WB: 免疫印迹

ICC/IF: 细胞染色

IHC-P: 石蜡切片

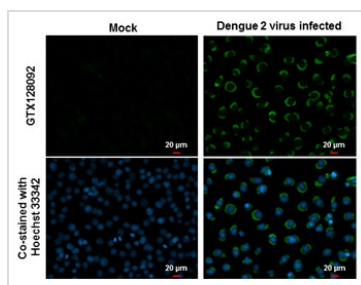
IHC-Fr: 冰冻切片

## 属性

形式	Liquid
存储溶液	PBS, 1% BSA, 20% Glycerol
保存剂	0.025% ProClin 300
存放说明	Store as concentrated solution. Centrifuge briefly prior to opening vial. For short-term storage (1-2 weeks), store at 4°C. For long-term storage, aliquot and store at -20°C or below. Avoid multiple freeze-thaw cycles.
浓度	0.46 mg/ml (Please refer to the vial label for the specific concentration.)
偶联	Unconjugated
RRID	AB_2885699
注意事项	仅供实验室使用。不适用于人类或动物的任何临床, 治疗或诊断用途。不适合动物或人类食用。

For full product information, images and publications, please visit our [website](#).

## 產品圖片

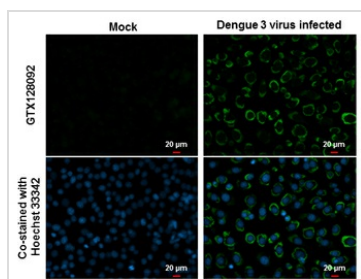
**GTx128092 ICC/IF Image**

prM (Dengue virus) antibody detects prM (Dengue virus) protein at cytoplasm by immunofluorescent analysis.

Samples: BHK-21 cells mock (left) and infected with Dengue virus 2 (right) were fixed in MeOH.

Green: prM (Dengue virus) protein stained by prM (Dengue virus) antibody (GTx128092) diluted at 1:2000.

Blue: Hoechst 33342 staining.

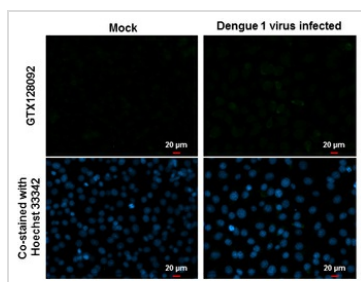
**GTx128092 ICC/IF Image**

prM (Dengue virus) antibody detects prM (Dengue virus) protein at cytoplasm by immunofluorescent analysis.

Samples: BHK-21 cells mock (left) and infected with Dengue virus 3 (right) were fixed in MeOH.

Green: prM (Dengue virus) protein stained by prM (Dengue virus) antibody (GTx128092) diluted at 1:2000.

Blue: Hoechst 33342 staining.

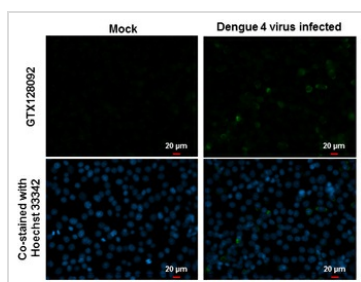
**GTx128092 ICC/IF Image**

prM (Dengue virus) antibody detects prM (Dengue virus) protein at cytoplasm by immunofluorescent analysis.

Samples: BHK-21 cells mock (left) and infected with Dengue virus 1 (right) were fixed in MeOH.

Green: prM (Dengue virus) protein stained by prM (Dengue virus) antibody (GTx128092) diluted at 1:2000.

Blue: Hoechst 33342 staining.

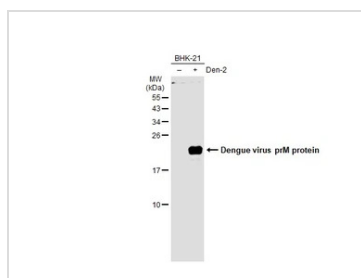
**GTx128092 ICC/IF Image**

prM (Dengue virus) antibody detects prM (Dengue virus) protein at cytoplasm by immunofluorescent analysis.

Samples: BHK-21 cells mock (left) and infected with Dengue virus 4 (right) were fixed in MeOH.

Green: prM (Dengue virus) protein stained by prM (Dengue virus) antibody (GTx128092) diluted at 1:2000.

Blue: Hoechst 33342 staining.

**GTx128092 WB Image**

Non-infected (–) and infected (+) Zebrafish embryos extracts (15 μg) were separated by 15% SDS-PAGE,

and the membrane was blotted with Dengue virus prM protein antibody (GTx128092) diluted at 1:1000.

The HRP-conjugated anti-rabbit IgG antibody (GTx213110-01) was used to detect the primary antibody.



For full product information, images and publications, please visit our [website](http://www.genetex.com).